

GOULBURN

AUSTRALIA



Contents

- 2. Events
- 4. Heritage
- 8. Culture
- 10. Adventure
- 12. Family Fun
- 14. Shop
- 18. Wellness
- 20. Taste
- 26. Occasions
- 28. Live
- 32. Stay
- 38. Wander
- 40. Canberra Region Tablelands
- 41. Goulburn CBD Map
- 42. Goulburn City Map
- 44. Goulburn City Street Index



Emergencies: 000

Council: 02 4823 4444

Fire: 02 4822 1608

Hospital: 02 4827 3111

Police: 02 4824 0799

SES: 02 4828 5600

Taxi: 02 4821 2222

Train: 02 4828 5811



93.5 FM Commercial

100.7 FM Country

103.3 FM Community

1368 AM Classic



Goulburn Visitor Information Centre

Head into the Goulburn Visitor Information Centre for local advice on creating a memorable trip in the City and its surrounding region.

OPEN: 9am - 5pm weekdays,
10am - 4pm weekends & Public Holidays
(Closed Christmas Day).

ADDRESS: 201 Sloane Street
(Locked Bag 22)
Goulburn NSW 2580

PHONE: 02 4823 4492 / 1800 353 646

EMAIL: info@goulburnaustralia.com.au

WEB: www.goulburnaustralia.com.au

Mobile Visitor Information Centre

The Mobile Visitor Information Centre, affectionately known as 'Vickie', attends events and locations in and around the Goulburn region. On board you'll find information on local attractions, events and everything that's happening [#rightnowingoulburn](#)



Goulburn is perfectly positioned only 2 hours from Sydney, under 1 hour from Canberra and just over 1.5 hours to the coast by car.

Express coaches depart Sydney, Melbourne and Canberra daily. Sydney Trains and NSW Trainlink services both stop at Goulburn, Tarago and Marulan daily.

While you're here, get social with us [#rightnowingoulburn](#)



Disclaimer: Council provides this information with the understanding that is not guaranteed to be accurate, correct or complete. Conclusions drawn from the information are the responsibility of the user. Every effort has been made to ensure accuracy. However, Council assumes no responsibility in the event that any information is incorrect. Council assumes no liability of damages incurred as a result of incomplete, incorrect or omitted information. Businesses included in this directory are not necessarily endorsed or approved by Council. The maps are for general information and do not necessarily reflect actual routes, locations or services provided. The user of this information assumes all liability for their dependence on it.

Artwork and design: Knockout Photography & Design.

Photos: All images are copyright to Goulburn Mulwaree Council and/or respective photographers and may not be reproduced in any other form. Courtesy of: Tahlia Aubusson, Micah Boerma, Madi Fitzgerald Photography, Small Details Self-Contained Accommodation, Zoe Vaughan Photography, Don Fuchs and Paul Livingston; advertisers' supplied images; Instagram, Twitter and Facebook and others.

Be enticed by the country charm of Australia's first inland City. Perfectly positioned just two hours from Sydney, an hour from Canberra and just under two hours to the coast – a world rich in heritage, culture, natural beauty and adventure is ready to be explored.

Embrace relaxed country living, with city benefits. This region presents a unique and balanced lifestyle opportunity to enjoy stunning rural landscapes, heritage architecture, contemporary art, modern boutique shopping, relaxed casual dining and plenty of fresh air.

With remarkable attractions, regular events and a variety of accommodation options – Goulburn is the ideal destination for that short break or a longer one.

Welcome to Goulburn Australia.





EVENTS

What's on?

With a vibrant year-round calendar of events for the whole family, there's always something exciting going on! Whether it's live performances, festivals or sporting events.

For cultural connoisseurs – enter our galleries for exhibition openings and workshops, or experience live music and regular theatre performances. For historians – explore our museums and see historical displays, or engage in talks and social events.

For thrillseekers – there are all sorts of events on at the racecourse, paceway, speedway or motorsport tracks.

Browse weekend markets across the City and surrounding villages where you will find fresh country produce, bric-a-brac and unique handmade items.

There's always something happening right now in Goulburn.

#rightnowingoulburn



While you're here...

- Pick up a copy of our latest Seasonal Calendar of Events to see what's on.
- Get social with us at our events and use #rightnowingoulburn

CALENDAR OF EVENTS

Summer



- Pictures and Popcorn - in the Park
- Carols of Hope
- Pictures and Popcorn - at the Pool
- Australia Day Celebrations
- Australian Blues Music Festival
- Multicultural Festival & Vibesfest

Min. 11.6°C



Max. 26.7°C

Autumn



- The Goulburn Show
- Goulburn Comic Con/Bookfest (alternate years)
- Goulburn Mulwaree Rotary Swap Meet
- Tallong Apple Day Festival
- GNPS Family Fun and Firework Night

Min. 7.9°C



Max. 19.9°C

Winter



- Tarago Truffle Hunts
- Pictures and Popcorn - at the Arena
- Goulburn Poultry Fanciers' Society Annual Show
- Buskout

Min. 2.1°C



Max. 12.3°C

Spring



- Golf NSW Regional Qualifier/Goulburn Cup
- Lilac City Festival
- Marulan Kite Festival
- Steampunk Victoriana Fair
- Hockey NSW Indoor State Championships
- Girls Day Out at the Races

Min. 7.06°C



Max. 19.7°C

PLEASE NOTE: Temperature ranges indicated above are based on season averages.



HERITAGE

Experience the past.

Discover fascinating stories of our eclectic history through the abundance of museums, homesteads and stunning heritage architecture.

The region was traditionally a meeting place for many Aboriginal groups, then in 1818 Hume and Meehan first crossed the area where Goulburn was settled. On the 14th of March in 1863, 45 years later, Goulburn was declared Australia's first inland City by a royal letters patent, issued by Queen Victoria.

Goulburn grew strong agricultural roots from the profitable wool industry. The cathedrals, a short-lived gold rush in the region and the development of the rail system further benefited the City's growth. Grand historic buildings and homes that stand today illustrate perfectly how Goulburn was a very wealthy city during the 19th century.

#rightnowingoulburn



While you're here...

- Learn about Australia's industrial revolution at the Rail Heritage Centre and Historic Waterworks.
- Feel like an aristocrat and enjoy a Devonshire tea at the historic Riversdale Homestead.

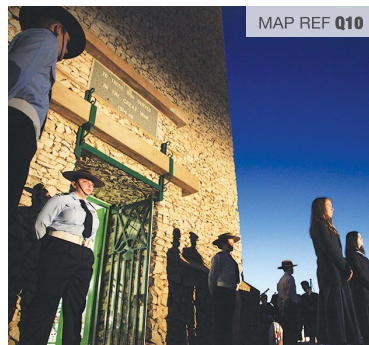


ROCKY HILL WAR MEMORIAL & MUSEUM

Rocky Hill War Memorial opened in 1925 as a lasting tribute to the men and women of Goulburn who served during WW1.

Sponsored by the community and designed by renowned architects, E. C. Manfred and Sons, the Memorial tower is constructed of concrete and clad in locally sourced stones – some of which were carried to the site by local residents and returned servicemen, as part of ANZAC Day commemorations in 1923. Located on a prominent rocky outcrop, the Memorial is a must-visit with the viewing platform at the top providing a spectacular view over the City and surrounding areas.

A small Museum opened in the basement of the Tower in 1927 to house a collection of objects from the Great War, including 16 items of National Significance. The collection has grown extensively over the years and now spans Australia's involvement in war from



MAP REF Q10

the 19th century to the current day. In 2000 the collection moved into the repurposed caretakers' cottage and in 2019 a new contemporary Museum building was constructed alongside, to provide additional exhibition and education space.

Rocky Hill War Memorial is listed on the Register of the National Estate.

OPEN:	Lookout: 7am - 7pm daily Museum and Tower: Wed. Fri. Sat. Sun. Mon. 10am - 4pm and all Public and School Holidays. Group tours by appointment.
ENTRY:	Gold coin donation or \$3 p/p for group bookings.
ADDRESS:	Memorial Drive, Goulburn
PHONE:	02 4823 4527 / 02 4823 4842
EMAIL:	museums@goulburn.nsw.gov.au

www.goulburn.nsw.gov.au



MAP REF L15

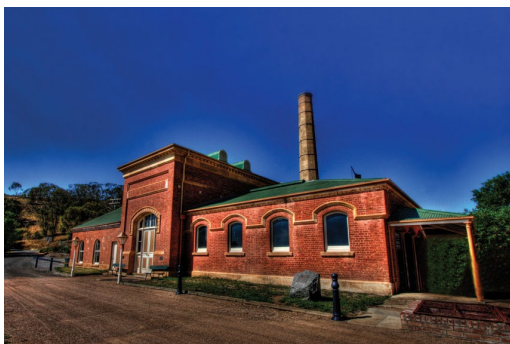
GOULBURN RAIL HERITAGE CENTRE

The Goulburn Locomotive Roundhouse is the largest heritage-based operating roundhouse in NSW and displays the historic transition from steam to diesel operation.

Inside the Goulburn Rail Heritage Centre, a range of locomotives and items of rolling stock are exhibited. Additionally there are other items of heritage machinery and equipment relevant to the Centre's history, including – a significant part of Goulburn's history – the 42 road circular shed with its 90 foot turntable that was built in 1918. The Roundhouse comprises a workshop complete with a large wheel lathe, machine shop, sheet metal shop and blacksmith's forge.

OPEN:	Tue. to Sat. 10am - 3pm (last tour 2.30pm), Sun. 9.30am - 2pm
ENTRY:	Adults \$12, Concession \$8, Children \$5
ADDRESS:	12 Braidwood Road, Goulburn
PHONE:	02 4822 1210

www.roundhouse.org.au



GOULBURN HISTORIC WATERWORKS MUSEUM

Built 1883-1885, this facility and museum demonstrates the culmination of steam power technology in the late 1800s and the importance of public water utilities in that era. The building itself is in excellent condition and a fine example of the Victorian Georgian style of architecture. It contains a rare steam beam engine made in 1883 by the Appley Bros. of London.

The Museum's collection is highly significant and enhanced greatly by the bulk of the collection being located in its original site and remaining functional. Additionally, the 1866 Hick, Hargreaves & Co. Corliss valve engine is important in its own right as the oldest engine of its type in the world.

These magnificent engines can be viewed "under steam" at certain times throughout the year.

Home to the annual Steampunk Victoriana Fair, melding the classical Victorian era with

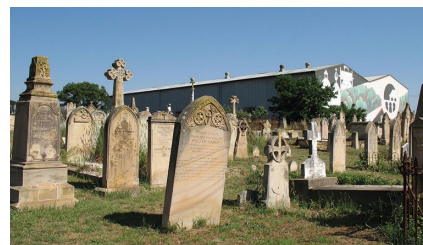


MAP REF J6

industrial progress and all things powered by steam. The Steampunk Victoriana Fair sees music, markets, inspired activities and splendid characters wandering the grounds – complementing the Goulburn Historic Waterworks' architecture and aesthetic.

OPEN:	Sun. 10am - 4pm, Mon. and Tue. 10am - 2pm. Public and most School Holidays. Steaming dates available at Visitor Information Centre. Group tours welcome by appointment.
ENTRY:	By gold coin donation.
ADDRESS:	Marsden Weir, off Fitzroy Street, Goulburn
PHONE:	02 4823 4448
EMAIL:	museums@goulburn.nsw.gov.au

www.goulburnwaterworks.com.au



FAMILY HISTORY

As Australia's first inland City, many Australians trace their family trees through Goulburn and the region. Goulburn offers several resources for visitors seeking information on the history of the area and their genealogical heritage, including cemetery records at the Visitor Information Centre, Goulburn Mulwaree Library's Local Studies Section, museums and Historical Societies.

The Local Studies Section provides access to a variety of resources including the State Records' Archives Resource Kit, historical local newspapers, cemetery records and an historical photo database.

OPEN:	Visitor Information Centre 9am - 5pm weekdays, 10am - 4pm weekends and Public Holidays (Closed Christmas Day).
ADDRESS:	201 Sloane Street, Goulburn
PHONE:	02 4823 4492 / 1800 353 646
EMAIL:	info@goulburnaustralia.com.au

www.goulburnaustralia.com.au





SELF-GUIDED TOURS

Goulburn was settled in the 1820s and has since told a rich history. Today, the City's opulent past is reflected in the many buildings which have now been faithfully restored to their former glory.

When visiting Goulburn, ensure that you allow some time to stretch out your legs and explore the historic CBD for yourself, picking up one of the Visitor Information Centre's Self-Guided Tour brochures.

There is a wide range of themed self-guided tours available, which allow you to explore our beautiful historic City at your own pace, including; a Heritage Tour, Goulburn's Watering Holes, Historic Belmore Park, City of Roses, Cemeteries and Rail Heritage.

Discover some old tales, admire Goulburn's beautiful gardens and stunning buildings that line the wide roads - roads which once led Australia's first settlers, bushrangers, pioneers and convicts to, what was once, NSW's second largest City.

OPEN: Visitor Information Centre
9am - 5pm weekdays, 10am - 4pm
weekends and Public Holidays
(Closed Christmas Day).
ADDRESS: 201 Sloane Street, Goulburn
PHONE: 02 4823 4492 / 1800 353 646
EMAIL: info@goulburnaustralia.com.au

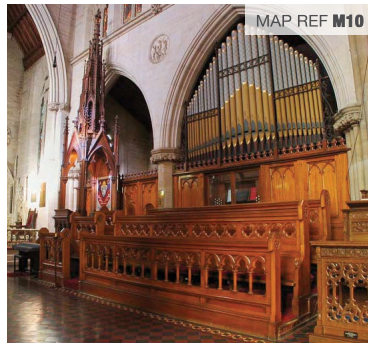
BELMORE PARK

Belmore Park is situated in the centre of Goulburn's CBD. From as early as 1833 it was the City's Market Square, where merchandise was exchanged.

In 1869 it was renamed Belmore Square, in honour of Lord and Lady Belmore's visit to Goulburn for the opening of the railway between Goulburn and Sydney. From 1910 to 1926 the Park was home to a miniature zoo.

Belmore Park has remained the heart and soul of Goulburn, hosting a number of community activities and celebrations.

OPEN: Visitor Information Centre 9am - 5pm
weekdays, 10am - 4pm weekends
and Public Holidays (Closed
Christmas Day).
ADDRESS: 201 Sloane Street, Goulburn
PHONE: 02 4823 4492 / 1800 353 646
EMAIL: info@goulburnaustralia.com.au



ST SAVIOUR'S CATHEDRAL

St Saviour's Anglican Cathedral is a magnificent example of Decorated Gothic architecture and a serenely beautiful place of worship – it's also the reason why Goulburn in 2013 celebrated its 150th birthday as Australia's first inland City. Royal letters patent granted by Queen Victoria on March 14 1863, established the Goulburn Diocese. As it thus became the official seat of the first Bishop, Messac Thomas, the (by then) thriving country town gained City status.

St Saviour's – named for the Saviour himself, Jesus Christ – remains the mother church of what is now the Diocese of Canberra/Goulburn. The golden sandstone Cathedral is the great 19th century architect Edmund Blacket's crowning achievement. It was completed in 1884 and took 10 years to build around the original (1839) St Saviour's church, whose bricks form the cathedral floor.

St Saviour's is the most richly decorated of any Australian church. Its interior, with many lovely stained glass windows, ornate 3,000 pipe organ, intricate stone carving and quietly reflective Soldiers' Chapel offers visitors from around the world a memorable place of spiritual refreshment.

OPEN: 10am - 4pm daily dependant on Guide availability, please phone ahead to confirm.
Group tours by arrangement.
ENTRY: By donation.
ADDRESS: 170 Bourke Street, Goulburn
PHONE: 02 4821 2206
EMAIL: office@goulburncathedral.org.au

www.goulburncathedral.org.au



MULWAREE HIGH SCHOOL REMEMBRANCE MUSEUM

Begun in 1992, the MHS Remembrance Project is a joint school-community project. It comprises two parts.

Firstly, it includes a growing collection of primarily Goulburn and District military memorabilia from current conflicts back to the New Zealand Maori wars, fought between 1845 and 1872.

Secondly, a Remembrance Corridor along the eastern and northern borders of the school comprised of an Australian native tree for Goulburn and District service men or women killed on active service during the two World Wars and Vietnam War.

OPEN: Sunday 2pm - 4pm; ANZAC Day and Remembrance Day 12pm - 4pm; Vietnam Veterans' Day 1pm - 4pm or by appointment.
ENTRY: Gold coin donation.
ADDRESS: 40 McDermott Drive, Goulburn (entry via Teachers' car park)
PHONE: 02 4821 2587



RIVERSDALE HOMESTEAD

Built in the late 1830s as a wayside inn, Riversdale later became home to District Surveyor, Edward Twynam and his family who acquired it in 1875. Appointed Chief Surveyor of NSW during the 1890s, Edward and his family occupied Riversdale for 95 years, prior to its purchase by the National Trust in 1967. Standing within its original paddocks and outbuildings, Riversdale is a fine example of a Colonial Georgian home surrounded by beautiful gardens. Enjoy the homestead's large collection of Australian Colonial furniture, Emily Twynam's wood carvings, arts and crafts and Shop.

OPEN: Mon. Tue. Thu. & every 3rd Sunday 10am - 2pm, other days by appointment; booked groups welcome.
ENTRY: Adults \$10, Concession \$8, Families \$25, National Trust Members free (prices subject to change).
ADDRESS: 2 Twynam Drive, Goulburn
PHONE: 02 4821 4741
EMAIL: riversdale@nationaltrust.com.au

www.nationaltrust.org.au/places/riversdale



GARROORIGANG HISTORIC HOME (1857)

Unique heritage home of the Hume family, descendants of Explorer Hamilton Hume, containing an extraordinary collection of original Colonial and Victorian furnishings and historical items spanning 160 years of Australian history. Personally guided tours through the homestead tell the stories of its life as an Inn on the road to the goldfields, school for the "sons of gentlemen" and today as a rare surviving example of living during the Victorian era. Set in beautiful grounds which include a 140 year old rose, Garroorigang is living history. Coaches welcome. Grounds available for weddings/ events. B&B by arrangement.

OPEN: 9.30am - 12.30pm & 1.30pm - 4.30pm daily. Tour & tea for groups by booking.
ENTRY: Adults \$12, Groups (10+) \$10 p/p, Children (12 to 18) \$5, Family with small children \$25
ADDRESS: 209 Braidwood Road, Goulburn
PHONE: 02 4822 1912 / 0410 499 374
EMAIL: garroorigang@hotmail.com

www.garroorigang.com.au



MARULAN HISTORIC MEANDER

Discover Marulan and chat to a friendly local as you learn the history of this peaceful little village, with the Marulan Historic Meander.

This self-guided walk takes you through the streets of Marulan to uncover the history of the area and the people that came before us. The Police Station and Residence, Railway Station, Great Southern Garage, Churches and old Hotels are just some of the pieces of history that you will uncover along the way.

OPEN: Visitor Information Centre 7am - 6pm weekdays and 7am - 3pm weekends. Public Holidays vary.
ADDRESS: 52 George Street, Marulan
PHONE: 02 4841 1717
EMAIL: info@discovermarulan.com.au

www.discovermarulan.com.au



CULTURE

Art, music and performances.

Immerse yourself in our captivating galleries and performance venues and let your imagination wander.

Visit a local gallery and admire the handiwork of acclaimed local and regional artists, or explore the new contemporary public art trail providing countless Instagram opportunities.

Embrace the vibrant theatrical community and catch a show at the Art Deco playhouse, The Lieder Theatre. Established in 1891, it is the longest running theatre company in Australia which hosts plays, musicals and pantomimes throughout the year.

For the more upbeat, start off your weekend by visiting one of the local clubs or pubs to enjoy a live music performance by local talent.



GOULBURN CLUB

The heritage Goulburn Club overlooking Belmore Park is a great place to enjoy music and relax by an open fire or on the balcony. It is a small volunteer-run registered club dating back to the 1800s.

Regular events include live music every Friday and Sunday, changing art and photography exhibitions and special performances. The Club is also home to groups such as the GRUB ukulele band on Thursdays and session players on alternate Fridays.

Members and visitors can book Goulburn's only squash court, and rooms can be booked for private functions (details on website).

OPEN: Thursday 5pm - 10pm, Friday 5pm - 12am & Sunday 1pm - 5pm
ADDRESS: 19 Market Street, Goulburn
PHONE: 02 4821 2043
EMAIL: secretary@goulburnclub.com.au

www.goulburnclub.com.au



#rightnowingoulburn



GOULBURN REGIONAL ART GALLERY

Goulburn Regional Art Gallery is the region's hub for presenting, exhibiting and collecting contemporary art. Our program is big, bold and full of ideas that provoke conversation and connection to the work of the artists we exhibit. Every exhibition transforms the Gallery in to a new space that encourages the exploration of new ideas, mediums and work.

We run a big calendar of programs, events and creative classes that cover all aspects of contemporary art, for all ages. We welcome everyone to critique and discuss the works we bring in to the community.

Our programs present what is happening now in Australian contemporary art, right here in Goulburn.



IMAGE CREDITS

- Arlo Mountford 'Deep Revolt' installation view. Image Silversalt Photography.
- 'Goulburn Bustle' installation view. Image Silversalt Photography.

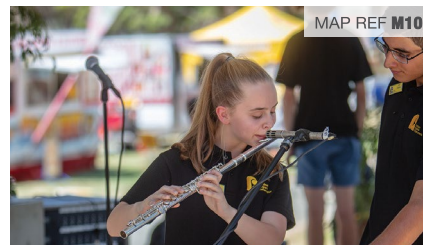
OPEN: Monday to Friday 9am - 5pm
Saturday 12pm - 4pm
Closed Sundays and Public Holidays.

ADDRESS: Civic Centre, 184 Bourke Street, Goulburn

PHONE: 02 4823 4494

EMAIL: artgallery@goulburn.nsw.gov.au

www.goulburnregionalartgallery.com.au



HUME CONSERVATORIUM

Based in Goulburn, "HumeCon" is your home for everything musical. A member of the Association of NSW Regional Conservatoriums, HumeCon is the place for you whether you want to learn, listen to, or just love music.

Enjoy concerts, ensembles and a diverse range of live music experiences. Tuition by qualified tutors with weekly lessons for musicians of all ages (including early childhood music classes). Share music and make new friends in our bands, choirs and other ensembles. Record in our "Rock Con" recording studio and get your hands on your musical needs in our onsite shop. HumeCon – we make music meaningful for you.

OPEN: Monday to Thursday 10am – 6pm
Friday 10am – 5pm

ADDRESS: 160 Bourke Street, Goulburn

PHONE: 02 4821 8833

EMAIL: enquiries@humecon.nsw.edu.au

www.humecon.nsw.edu.au



GALLERY ON TRACK

Gallery on Track is located in historic railway barracks on Blackshaw Road. Boasting soaring ceilings and timber floors, this heritage building provides a stunning backdrop for an ever-changing array of high quality original artworks and unique giftware created by local and regional artists and available to purchase.

Gallery on Track presents a new exhibition each month showcasing the individual talents of our member artists - painting, printmaking, ceramics, mosaics, woodwork, leatherwork, jewellery, felt making, quilting, textile arts and much more!

You can also explore your creativity at Gallery on Track as some of our skilled members regularly offer classes and weekend workshops in their areas of expertise including painting, printmaking, felt making and calligraphy.

Join us at Gallery on Track and enjoy being part of Goulburn's art and craft community - new members are always very welcome.

Gallery on Track is within easy walking distance of Goulburn's CBD and has on-site parking and full disability access.

OPEN: Wednesday to Sunday 10am - 4pm

ADDRESS: Blackshaw Road, Goulburn

PHONE: 02 4822 7889

EMAIL: galleryontrack@gmail.com

www.galleryontrack.org



SOUTHERN TABLELANDS ARTS

Making it happen – creative thinking is our business.

Southern Tablelands Arts is the peak arts and cultural agency for the region through its investment in and development of meaningful cultural development programs and services.

We aim to increase community engagement in arts and cultural activities through programs including arts and health, arts and environment and opportunities for creatives, young people and communities. We also support the Goulburn Film Group.

For current information and to sign up to our newsletter, visit our website below, or follow us on Facebook, Twitter and Instagram.

www.southerntablelandsarts.com.au





ADVENTURE

Outdoors, leisure and drives.

Escape the City and venture off the beaten track.

Explore unspoilt bushland and discover the natural beauty and wildlife of the region, with a stroll along one of the many bushwalks.

Change gears and cruise along an open winding road to a quiet country village, or put your foot to the floor around a race track.

Wet a line at Marsden Weir, Wollondilly River or Pejar Dam. Fishing is a popular year-round pastime for locals and tourists alike.

Closer to the City, tee off at the historic Golf Club, or take a short walk to any of the parks and recreation spaces within the City.



While you're here...

- Discover the new walking trail along the banks of the Wollondilly River – the perfect place for a family picnic.
- Camp under the vast sky, and see millions of stars like never before.

#rightnowingoulburn



OUTDOOR SPACES

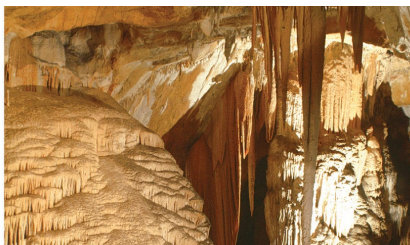
Visit the Goulburn Wetlands in May Street to enjoy a serene stroll in nature along the walking tracks, or peddle your way between the bird hides and viewing platform.

Take in the scenery along the recently developed Wollondilly Walking Track. It's perfect to walk, run or roll your way between Marsden Weir and Tarlo Street and enjoy the watercourse.

Enjoy stunning parks such as Belmore Park and Victoria Park with picturesque gardens, lush grass, picnic tables and children's playgrounds.

OPEN: Visitor Information Centre 9am - 5pm weekdays, 10am - 4pm weekends and Public Holidays (Closed Christmas Day).
ADDRESS: 201 Sloane Street, Goulburn
PHONE: 02 4823 4492 / 1800 353 646
EMAIL: info@goulburnaustralia.com.au

www.goulburnaustralia.com.au



WOMBEBYAN CAVES KARST CONSERVATION RESERVE

Hidden in a peaceful, sheltered valley just one hour from Goulburn, the Wombeyan Caves Karst Conservation Reserve offers guided and self-guided tours of spectacular limestone caves featuring vast caverns adorned with striking and delicate formations.

Enjoy the diverse range of flora and fauna. Follow one of the walking trails that lead you to spectacular canyons, lookouts and waterfalls.

A range of accommodation styles are available so why not stay awhile and discover it all.

OPEN: 9am - 4.30pm daily
ADDRESS: Wombeyan Caves Road, Wombeyan Caves, via Taralga
PHONE: 02 4843 5976
EMAIL: wombeyan.caves@environment.nsw.gov.au

[www.wombeyan.caves@environment.nsw.gov.au](mailto:wombeyan.caves@environment.nsw.gov.au)



BUNGONIA NATIONAL PARK

Bungonia's network of walking tracks and lookouts offer spectacular views to the Shoalhaven River and the Bungonia Slot Canyon. Adventurous visitors can enjoy one of Australia's prime wild caving spots (experience and equipment essential).

The park has a well-equipped car-based camping area (bookings required), including a camp kitchen and gas BBQ's.

Bungonia National Park is located 35km's east of Goulburn via Bungonia township. Vehicle entry fees apply.

OPEN: Open daily
ADDRESS: The Lookdown Road, Bungonia
PHONE: 02 4887 8244
EMAIL: npws.illawarrahighlands@environment.nsw.gov.au

www.nationalparks.nsw.gov.au



PHEASANT WOOD CIRCUIT



Pheasant Wood Circuit is a unique facility catering to all types of motoring enthusiast. Conveniently located just 3km off the Hume Highway in Marulan, Pheasant Wood Circuit is set within some of Australia's most beautiful bushland. The natural bowl provides panoramic views of the main circuit, even while sitting enjoying refreshments in the café.

Facilities include a challenging international standard racing circuit, spectator platforms, café, rallycross track, 4x4 training precinct, media and presentation rooms, corporate suite, private garages and 200 acres of dirt trails perfect for marathon, mountain bike, motorcycle or 4x4 events.

Pheasant Wood is the perfect circuit for road cars, race cars, legend and miniature cars, open wheelers and motorcycles. Whether it's your first time on a race track or a seasoned racer, the banked corners at Pheasant Wood will get that adrenaline pumping!

Types of events held at Pheasant Wood include track days, driver training, corporate events, product launches and private events.

Please check out our events calendar at www.pheasantwood.com.au and we'll see you soon!

OPEN: Tuesday to Sunday 8am - 4pm
ADDRESS: 8 Prairie Oak Road, Marulan
PHONE: 02 4841 1422
EMAIL: fun@pheasantwood.com.au

www.pheasantwood.com.au





FAMILY FUN

Something for everyone.

Goulburn is a hub for family fun, bursting with kid-friendly activities to form lifelong family memories!

Boasting a variety of beautiful walking trails, playgrounds, barbeque and picnic areas, and parks where children can run free and play.

On rainy days catch the latest movie at the cinema, visit an indoor play area, or the conveniently located shopping centre.

On Saturday mornings get active and participate in the Goulburn Park Run, an event for all ages.

The Library and Regional Art Gallery offer creative workshops for kids, visit their websites for current details.



While you're here...

- Take a selfie with Rambo the Big Merino
#thebigmerino
- Explore Goulburn with a game of Geocaching.
Grab a brochure from the Visitor Information Centre for all the details.

#rightnowingoulburn



GOULBURN AQUATIC AND LEISURE CENTRE

Whether you're after fun or fitness, the Goulburn Aquatic and Leisure Centre offers a range of programs and services. It is an all year round facility catering for all ages and abilities.

PROGRAMS AND SERVICES:

- General entry
- GALC Swim School/Squad
- Adult classes, aqua fitness and lane hire
- Schools program and swimming carnivals
- Intensive school holiday programs
- Aquathon
- Birthday parties and yearly events for families

FACILITY FEATURES:

- 25m Indoor pool (all year)
- Indoor Baby and Toddler pool (all year)
- 50m Outdoor pool (open October to March)
- Shaded grass spectator's bank

- Half-sized basketball court and playground
- Health and fitness centre
- Undercover pergola area
- Kiosk facilities
- Austswim Gold Licensed Centre
- Partners with Swim and Survive and Keep Watch initiatives
- Disability parking, access and programs available

OPEN: Mon. to Fri. 6am - 7.45pm, Sat. 8am - 5.45pm, Sun. & Public Holidays 9am - 5.45pm. Closed Christmas Day, Boxing Day and Good Friday.

ADDRESS: 85 Deccan Street, Goulburn

PHONE: 02 4823 4834

EMAIL: swimandfitness@goulburn.nsw.gov.au

www.goulburn.nsw.gov.au



FLETCHERS ARK FARMYARD

For your ultimate Farmyard experience, get up close and personal with a variety of farm animals.

The Farmyard is a relaxing venue catering for groups and birthday parties, with morning and afternoon tea available.

Check out our on-farm alpaca shop which stocks stunning Australian made alpaca products.

The Farmyard is open by appointment.

ADDRESS: 702 Pomeroy Road, Goulburn

PHONE: 0419 141 627



OUTDOOR FUN

The whole family will enjoy a visit to Goulburn Australia, with loads of activities for all ages.

Explore the great outdoors, discover our heritage and fascinating public art.

Discover and play at the newly installed Adventure Playground – an exciting space which caters for infants, teens, carers and families.

Master flips and tricks at the state-of-the-art Goulburn Skate Park complete with rails, half pipes and street features.

Burn some energy at the Multi-Sports Rage Cage, suitable for a range of sports including basketball, handball, soccer and more.

Explore Victoria Park and put your navigational skills to the test around the orienteering course, or try the world-wide craze of geocaching.

OPEN: Visitor Information Centre 9am - 5pm weekdays, 10am - 4pm weekends and Public Holidays (Closed Christmas Day).

ADDRESS: 201 Sloane Street, Goulburn

PHONE: 02 4823 4492 / 1800 353 646

EMAIL: info@goulburnaustralia.com.au

www.goulburnaustralia.com.au



TAKE ME HOME TEDDIES

Take Me Home Teddies is a Build-your-own Teddy Studio downstairs in Goulburn Soldiers Club.

You can choose from teddies, bears, animals and creatures. You then get to hand-stuff your new "furend" and place a wish in its tummy.

Name and adopt your teddy! Also choose from over 40 different outfits and costumes and matching shoes of course!

At the end, you receive a cool backpack bag to take your teddy home.

Party and group packages available.

OPEN: Wednesday to Friday 9am - 3pm
Saturday & Sunday 10am - 3pm
After hours available by appointment.

ADDRESS: 15 Market Street, Goulburn

PHONE: 0466 803 437

EMAIL: tmhteddies@gmail.com

www.takemehometeddies.com.au





SHOP

Retail therapy.

Goulburn's retail style reflects its rural heritage, with all the modern indulges. Two shopping centres bookend the City's traditional 'Country Mile of Shopping'. Personalised service and free parking is available throughout.

The main thoroughfare of Auburn Street is lined with a plethora of contemporary boutiques and speciality stores. Shop for beautiful home wares and lifestyle pieces, gifts, jewellery and accessories, as well as quality clothing and footwear.

Time your visit right and head to one of the weekend markets in Goulburn and the surrounding villages – they're a great place to source fresh local produce, arts and crafts, or for the pursuit of antiques and collectables.



While you're here...

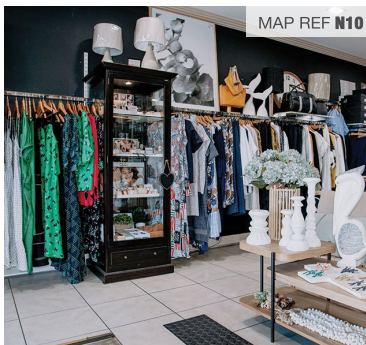
- Find eclectic treasures for your home and lifestyle by going antique shopping.
- Gather your friends and enjoy a day of shopping and lunch at one of the on-trend cafés dotted throughout the CBD.



YOUR HOME MATTERS

Your Home Matters is a stunning fashion and lifestyle store located right in the main street of Goulburn. This must-visit boasts a unique selection of products that cater to all. Offering unique and popular products including home wares, women's clothing, shoes and accessories, babies and kid's clothing, giftware and everything in between. A wander through the store will leave you charmed!

Whether you're treating yourself, or spoiling someone else, you won't be short of choices. Michelle and the Your Home Matters team passionately curate and hand-pick everything in store to inspire and delight.



With an extensive range of quality fashion brands like Elk, Louenhide, FRANKiE4 footwear, plus Wilson & Frenchy, Purebaby and LovetoDream for the littlies, be warned, few leave this warm and welcoming lifestyle store empty handed!

OPEN: Monday to Saturday
(store opening hours are seasonal)
ADDRESS: 266 Auburn Street, Goulburn
PHONE: 02 4822 7229
EMAIL: michelleable5@gmail.com



BAXTER BOOTS AND SHOES

Baxter Boots & Shoes is a family-owned and operated local business, founded in 1850. Our retail arm has been located in the main street for over 40 years.

We have a wide range of footwear to suit the whole family, including slippers, Ugg boots, school shoes and of course our own Baxter range.

Call in and see the friendly staff for your footwear needs.

OPEN: Monday to Friday 9am - 5.30pm,
Thursday 9am - 6pm,
Saturday 9am - 2pm
ADDRESS: 226 Auburn Street, Goulburn
PHONE: 02 4822 1680
EMAIL: baxtershop226@gmail.com

www.baxterfootwear.com.au



GOULBURN SOAP WORLD

Located centrally in the Auburn Street CBD, Goulburn Soap World offers a refreshingly different range of gifts and body care products.

Alongside the gorgeous gemstone jewellery and unique crystal specimens, you will find quality Australian made candles, toiletries and soaps. For your garden (or for a fun gift idea) the fairy corner has beautiful solar houses, fairies and accessories.

Check out the books, tarot, and oracle cards.

"The good energy shop".

OPEN: Mon. to Fri. 9am - 5.30pm,
Thu. 9am - 6pm, Sat. 9am - 2pm and
Sun. 10am - 2pm
ADDRESS: 241 Auburn Street, Goulburn
PHONE: 02 4821 8422



SOMETHING SPECIAL GIFTS & HOMEWARES

Established in 1991, Something Special is renowned for its huge offering of quality gifts, home wares and more recently, furniture, women's fashion, footwear, handbags and jewellery.

Something Special is a locally-owned business with local staff dedicated to providing customers with friendly, exceptional service.

Offering numerous gift options from baby gifts, books, crystal and glassware, men's gifts, soft furnishings, candles and diffusers, toiletries and body care through to unique pieces of furniture and wall décor.



Something Special's women's fashion range is ever growing and offers quality and stylish pieces for every day through to occasion wear, in sizes 8 through to a generous 18. With gorgeous footwear, sleepwear, handbags and accessories available as well, Something Special has your fashion needs covered.

OPEN: Mon. Tue. Wed. Fri. 9.30am - 5pm
Thu. 9.30am - 5.30pm
Sat. 10am - 2pm
ADDRESS: 224 Auburn Street, Goulburn
PHONE: 02 4821 9001
EMAIL: info@something-special.net.au



www.something-special.net.au



GOULBURN VISITOR INFORMATION CENTRE

Centrally located in the heart of Goulburn, the Goulburn Visitor Information Centre is a one-stop-shop for visitors and locals alike.

The recently refurbished Centre stocks a range of unique local and regional produce such as; cool climate wines, jams, preserves, honey, chocolates, coffee beans and more. A collection of locally made candles, jewellery, skincare products and gifts are also available.

An assortment of Goulburn Australia branded souvenirs and merchandise are also on offer. Whether it be a postcard, drink cooler or a toy Merino Sheep, you are sure to find something perfect to take home to loved ones or to send to family and friends overseas.

Our friendly team can help plan your stay in the region, offering a comprehensive range of information and local knowledge, as well as maps, brochures and more.

Plus there's free computer access, wireless internet, water, picnic tables and bathroom facilities available, including a baby change table and disabled access.



OPEN: 9am - 5pm weekdays, 10am - 4pm weekends & Public Holidays (Closed Christmas Day).
ADDRESS: 201 Sloane Street, Goulburn
PHONE: 02 4823 4492 / 1800 353 646
EMAIL: info@goulburnaustralia.com.au

www.goulburnaustralia.com.au



MAP REF H14

THE BIG MERINO GIFT SHOP

The Big Merino was built as a celebration of Goulburn's fine wool industry.

The Gift Shop has an amazing selection of pure merino and possum merino garments, Toorallie wool denim jeans, lanolin products, Australian made and tanned sheep skins and Australian made Ugg Boots, souvenirs and much more.

Visitors can climb the stairs to the lookout or view a permanent exhibition on the 200 year history of wool in Australia.

The Big Merino stands 15.2 metres tall, 18 metres long and weighs in at around 100 tonnes. Admission is free.

OPEN: 8.30am - 5.30pm daily
ADDRESS: Cnr Hume & Sowerby Streets, Goulburn
PHONE: 02 4822 8013

www.bigmerino.com.au

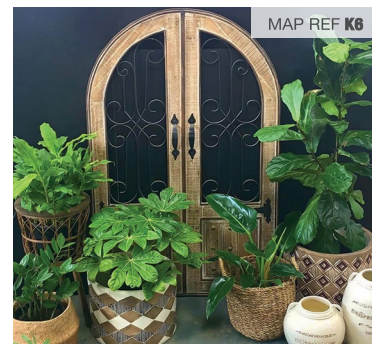


GEHL GARDEN CENTRE

The Gehl Garden Centre provides customers an experience and destination to remember.

Located next to the Wollondilly River and Waterworks Museum at 70 Fitzroy Street, the nursery has an incredible range of natives, exotics, shrubs, advanced trees, windbreaks, indoor plants, giftware, pots and garden artistry. Servicing the Goulburn area for over 40 years, the staff at the Gehl Garden Centre are friendly, qualified and ready to help.

Valerie's Café is a new feature at the nursery, offering locally roasted coffee and fresh food, a great atmosphere and a perfect place to relax with friends, surrounded by greenlife.



MAP REF K6

With a brand new yoga studio run by Life Yoga Goulburn on the premises, the Gehl Garden Centre and Valerie's Café are a must-visit for the green thumb, the plant enthusiast, the coffee lover, or anyone in need of a relaxing afternoon in Goulburn.

Cultivate, caffeinate and meditate, all in the one place.

OPEN: 7 days a week.
Nursery: 9am to 5pm
Café: 7am to 4pm (seasonal - times may vary)
Yoga Studio:
www.lifeyogagoulburn.com
ADDRESS: 70 Fitzroy Street, Goulburn
PHONE: 02 4821 5853
EMAIL: gehl@tpg.com.au

www.gehlgardencentre.com







Image: Zoe Vaughan Photography

WELLNESS

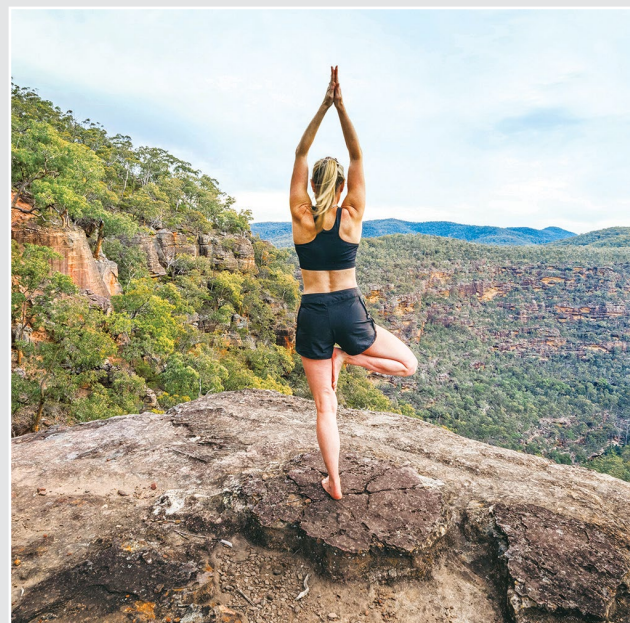
Health and wellbeing.

In between all the fun of exploring what this incredible region has to offer, find some time out for yourself to exhale and unwind.

Personal wellbeing is about having those extra moments to stop and focus on your own mind and body, and do things that make your soul happy.

Goulburn, whilst rich in heritage, also provides a wide range of modern day contemporary services, catering to all your spoils. The City boasts a variety of yoga, meditation, Pilates and massage studios, as well as day spas.

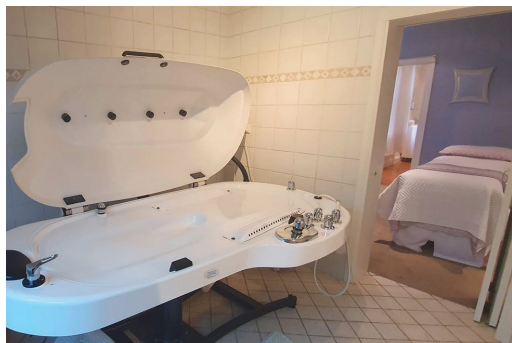
Whatever is your passion, and makes your soul smile – you will find all you need right here to relax, refresh and recharge.



While you're here...

- Spoil yourself with a rejuvenating pampering session and feel your troubles dissolve.
- Reconnect with nature and take a peaceful bushwalk as a positively recharging experience.

#rightnowingoulburn



GOULBURN DAY SPA

The Goulburn Day Spa is a haven where you can escape from the stresses of modern living and spend time rebalancing your body, mind and soul.

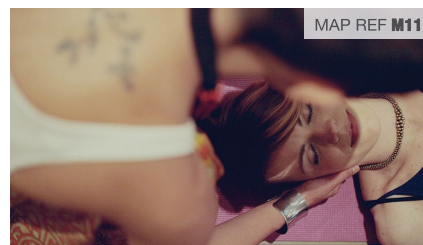
It's situated just one block back from the main street, in a nice quiet area with a beautiful cottage style garden to walk through to get to the front door, plus plenty of parking for clients' convenience.

The Goulburn Day Spa has been established for over 15 years and has dedicated beauty therapists who deliver a very high standard with their treatments and have years of experience in the industry.



Specialising in body treatments, facials and massage. They also offer pedicures, manicures, shellac, waxing, tinting, lash lifts, spraytans, makeup, packages and gift vouchers. Stockists of Dermalogica Skincare and Jane Iredale Mineral Makeup.

OPEN: Tuesday & Wednesday 9am - 6pm
Thursday 9am - 7.30pm
Friday 9am - 6pm
Saturday 9am - 2pm
Extended hours available outside these hours on request.
ADDRESS: 88 Bourke Street, Goulburn
PHONE: 02 4822 0688



PURPLE DAWN HEALING

Purple Dawn Healing is a holistic centre specialising in Meditation and Bodywork.

Our focus and aim is to provide a safe space and support for the client to first learn about themselves and eventually move forward with healing as a whole being. The clinic and practitioners are a support for the individual, as they have the power and responsibility to engage and progress at their own pace and desire.

Our therapies range from remedial massage to meditation and energy work. We offer one-on-one classes and workshops.

OPEN: Wed. Thu. Fri. 9am - 3pm, Mon. Tue. and after hours by appointment only. Closed Sat. and Sun.
ADDRESS: 126a Auburn Street, Goulburn
PHONE: 02 4854 2244
EMAIL: info@puredawnhealing.com.au

www.puredawnhealing.com.au

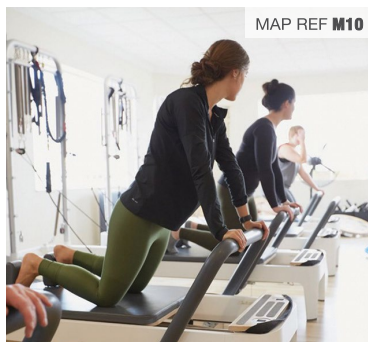


MIRACLE MESSAGE PILATES AND FITNESS

Miracle Message Pilates and Fitness offers an integrated approach to health and wellness.

It isn't often that you will find a space that offers massage and Pilates under one roof. They may even seem like an unusual pair — until you have seen them working side by side. These two separate disciplines complement one another and come together to work towards the same goals.

Using this combined approach, our qualified and experienced therapists and instructors use massage which allows us to release tension in your body when you are experiencing pain, injury, or weakness.



From there, Pilates allows us to work with you to strengthen those areas of weakness, allowing for a holistic and integrated approach to fitness and health.

OPEN: Monday 6am - 7am / 9am - 8pm
Tuesday 5am - 7pm
Wednesday 6am - 7pm
Thursday 5am - 7am / 9am - 8pm
Friday 5am - 4pm
ADDRESS: 49 Clifford Street, Goulburn
PHONE: 02 4821 8500
EMAIL: miracle.message@bigpond.com

www.miraclemassage.com.au



LIFE YOGA

Our stunning new studio offers a perfect selection of classes, workshops and events. From gentle Mobility or Restorative to the more challenging Flow, Align or Aerial Yoga classes... there will be something that is the right fit for you! Our yoga community is very important to us, so expect to be welcomed, nurtured and valued!

- Private Tuition Available
- Pregnancy and Postnatal Care

Our super relaxing weekend Yoga Retreats are offered several times a year, or perhaps you'd like to join us in Bali, Vietnam or New Zealand for a real yoga adventure!

OPEN: Monday to Saturday
ADDRESS: 70 Fitzroy Street, Goulburn (in the Gehl Garden Centre Hub)
PHONE: 0417 656 043

www.lifeyogagoulburn.com





TASTE

Eat and drink.

Indulge your senses with the region's diverse spread of food and beverage.

Find yourself in one of Goulburn's burgeoning foodie scene eateries. Here you can enjoy high quality, fresh, regionally grown produce or varied exotic cuisines, paired with a range of local cool climate wines.

For those who enjoy their trendy smashed avo and eggs on toast, the City has a bustling café culture and a variety of popular brunch spots to choose from – complete with great coffee and character.

An escape to the country wouldn't be complete without a pub stop, or a few. It's an easy walk to the local for a hearty meal and country charm.



While you're here...

- Help the environment and bring your own coffee cup in to our responsible cafés.
- Call into the Visitor Information Centre and pick up the latest 'Taste' Guide.

#rightnowingoulburn



MAP REF M10

THE ROSES CAFÉ GOULBURN

On June 19th 2006, the Rose family opened The Roses Café.

After years in the hospitality industry in Sydney, this café was able to reflect Carole and Michael's vision – to create something from the past – a café that made all its products onsite, different from other 'generic' cafés that source from manufacturers and wholesalers.

In partnership with some of Goulburn's finest young people, providing a service that has disappeared in recent years, the Roses Café has gone from strength to strength, with cafés now open in Yass and Mittagong.

The Roses Family welcomes you and don't forget: "We make it all."

OPEN: 8am to 5pm weekdays
8am to 2.30pm weekends
Closed Public Holidays.
ADDRESS: 10 Montague Street, Goulburn
PHONE: 02 4822 2248
EMAIL: info@therosescafe.com.au

www.therosescafe.com.au



MAP REF N10

HARVEST

Harvest Goulburn is located on the corner of Market and Auburn Streets overlooking the stunning Belmore Park. Open seven days and can be booked for night time private dinners and events.

Harvest offers quick grab-and-run options from the cabinet, or a seasonal menu which changes regularly to accommodate the seasonal produce.

OPEN: Monday to Friday 6am - 5pm
Saturdays and Sundays 7am - 3pm
Open Public Holidays (except Christmas Day and Boxing Day)
ADDRESS: 175-181 Auburn Street, Goulburn
(Cnr. Auburn and Market Streets)
PHONE: 02 4823 9768
EMAIL: harvestgoulburn@gmail.com



MAP REF H15

GRIT CAFÉ

Est. 2013. Conveniently located just off the Hume Highway at the south entrance of Goulburn. Independently owned and operated by locals Kelsey, Charlie and their awesome team.

Our ever-evolving menu specialises in fresh, healthy food catering for everyone. Proudly serving up Delano speciality coffee in our relaxed and friendly environment.

At Grit we are passionate about our role in minimising waste through only using biodegradable and reusable items, opting for sustainable and eco-friendly measures throughout our café.

We would love to see you and welcome you to visit us.

OPEN: Monday to Friday 6am - 4pm
Saturday to Sunday 7am - 4pm
ADDRESS: 6 Sowerby Street, Goulburn
PHONE: 02 4822 1191



GREENGROCER ON CLIFFORD

Greengrocer Café & Cycling is an institution of the Goulburn hospitality scene, a local coffee hub and meeting place. The sunny outdoor dining area makes it the perfect place to catch up for brunch.

Our menu offers classic seasonal options that you know and love, but with a Greengrocer twist. We offer a fresh, unique, casual dining experience where everyone is comfortable. Breakfast, lunch and dinner are covered with a focus on eating healthy. We are fully licensed, stocking a variety of local wine, so pop on in for a wood-fired pizza, steak, pasta, fish, ribs and a beer.

Homemade cakes and scones are baked daily.

Close to the cinema to meet for lunch or dinner before the movies.

Why not browse in our wonderful Cyclery stocking:

- Pinarello
- Wilier
- Cannondale
- Campagnolo
- Castelli
- Shimano
- GT and other great brands.

Bike rides leave daily.

OPEN: Monday to Wednesday 6am - 6pm
Thursday & Friday 6am - 10pm
Saturday & Sunday 7am - 4pm
ADDRESS: 37/41 Clifford Street, Goulburn
PHONE: Café - 02 4821 0033
Bike Shop - 02 4821 0099

www.greengrocerycycling.com.au





TRAPPERS BAKERY OF GOULBURN

Trappers Bakery of Goulburn is a National award-winning bakery that bakes a large range of breads to traditional recipes (no pre-mixes). Enjoy all of our homemade products with an Allpress coffee in front of our huge open log fire in the winter, or our glass enclosed verandah.

The Bakery offers a large selection of pies, sausage rolls and quiches, or you may like to select from the great range of fresh sandwiches, bread rolls, yoghurt, fresh fruit and salads. For those of you with a sweet tooth, be sure to check out the range of cakes, slices and biscuits.



MAP REF H15

Trappers Bakery can cater for large groups and coaches in an efficient and quick manner and there is ample off-street parking. The Bakery is perfectly located just one minute from the Hume Highway at the southern end of Goulburn. It is also next to Goulburn's famous Big Merino. Eat in or takeaway.

OPEN: 5.30am - 7pm daily
ADDRESS: 2 Sowerby Street, Goulburn
PHONE: 02 4821 4477
EMAIL: info@trappersbakery.com.au

www.trappersbakery.com.au



THE MARULAN CAFÉ

Offering good old dependable and truly convenient local service, The Marulan Café offers a full range of newsagency products, including: NSW Lotteries, newspapers and magazines.

Our friendly café can seat 40 people for cakes, coffee, breakfast or brunch. Keep an eye out for our ever-popular themed dinner nights, where you can treat yourself to a range of cuisines. We also offer a catering service for all types of functions.

OPEN: 7am - 5pm Monday to Friday
 8am - 3pm weekends and Public Holidays
ADDRESS: 52 George Street, Marulan
PHONE: 02 4841 1717
EMAIL: admin@themarulancafe.com

www.marulancafe.com.au



MAP REF N10

FIRESIDE INN

Located in the heart of Goulburn's historic precinct, the Fireside Inn looks across Belmore Park to the grand Colonial architecture of the Goulburn Court House.

Built in 1934 by Goulburn merchant John E. Knowlman, it retains all the charm and warmth of a bygone era. During the winter months the large open fire adds warmth to the old English atmosphere.

Open for lunch and dinner, the Fireside Inn offers a delicious seasonal menu, prepared using fresh local produce.

OPEN: Tuesday to Friday:
 12pm - 2pm and 6pm - 9pm
 Saturday: 6pm - 9pm
ADDRESS: 23 Market Street, Goulburn
PHONE: 02 4821 2727
EMAIL: firesideinnrestaurant@gmail.com



YARRALAW SPRINGS WINES

This unique strawbale winery crafts award-winning wines from six classic varieties - Cabernet Sauvignon, Merlot, Pinot Noir, Chardonnay, Riesling and Chenin Blanc, all estate-grown using sustainable practices.

Enjoy a winery tour by the winemaker and tastings in the Cellar Door. Estate-grown olives are also available for sampling and purchase.

For a real farm experience, stay in the Vine Loft, a two bedroom fully self-contained cottage, and have the farm all to yourselves. A great experience for the kids or a getaway for couples.

OPEN: 1st, 2nd and 3rd Sunday of any month 11am - 4pm. Check website for changes, or by appointment (please call).
ADDRESS: 133 Muffets Road, Quialigo
PHONE: 02 4844 7188
EMAIL: cellardoor@yarralawsprings.com.au

www.yarralawsprings.com.au



KINGSDALE WINES

Our boutique winery is located only 7 km from Goulburn along the Crookwell Road and produces premium award-winning cool climate wines. We use organic practices and most of our wines are suitable for vegans.

Come and visit our Cellar Door and taste our wines, including a large range of white wines, our ever-popular Emma Shiraz, and a delicious Orange Liqueur wine.

You can also have a cappuccino or tea while enjoying our lovely views over Lake Sooley. If we are not too busy, you can inspect the winery and learn about wine making.

OPEN: 10am - 5pm weekends and most weekdays (please phone first on weekdays).
ADDRESS: 745 Crookwell Road, Kingsdale
PHONE: 02 4822 4880 / 0408 772 751
EMAIL: admin@kingsdale.com.au

www.kingsdalewines.com





HIBERNIAN HOTEL

Affectionately known as 'The Hibo', the Hibernian Hotel is one of the oldest pubs in Goulburn! Situated on Auburn Street, The Hibo was first licensed in 1850, and after an outstanding 17 decades of operation, it has matured into an award-winning hotel boasting a relaxed, warm, family-friendly environment for all to enjoy.

This traditional pub offers modern facilities 7 days a week including: TAB and KENO facilities, VIP gaming lounge, pool and jukebox, an extensive bistro menu, wine list, cozy fireplace and 12 tap beers! Live free entertainment on Friday and Saturday evenings is always popular.

BISTRO 1850 has been acknowledged by the Australian Hotel Association as:

- Winner of Best Casual Dining Venue Southern
- Winner of Best Steak NSW



OPEN: Monday to Saturday 10am - 1am
Sunday 10am - 10pm
Bistro 1850 open 7 days:
Lunch 11.30am - 2pm
Dinner 5.30pm - 9pm
Sunday dinner: 5.30pm - 8.30pm
ADDRESS: 145 Auburn Street, Goulburn
PHONE: 02 4821 3688
EMAIL: admin@thehibogoulburn.com

www.thehibogoulburn.com



GOULBURN GOLF CLUB

The Goulburn Golf Club welcomes you to experience one of the oldest country courses in Australia.

Centrally located, the established course has a few tricks up its sleeve. Long par fives, challenging par fours and tricky par threes will certainly keep you coming back.

After your game relax in our Clubhouse, indulge in a refreshment and enjoy a meal at The Greenside Bistro overlooking the course.

Whether it's a game of golf, wedding, party or just a relaxing meal with family and friends, the Goulburn Golf Club has you covered.

OPEN: Course open 7 days.
Club open Tue. 10am - 5pm,
Wed. & Thu. 10am - 8pm,
Fri. & Sat. 10am - late, Sun. 10am - 5pm
ADDRESS: 3 Golf Avenue, Goulburn
PHONE: 02 4821 2454
EMAIL: ggclub@bigpond.net.au

www.goulburngolfclub.com.au



THE SOUTHERN RAILWAY HOTEL

This heritage listed building is like having a time stamp back to 1872 with stained glass windows and railway-themed décor.

This establishment provides affordable accommodation, a friendly bar and great food.

The Bistro is open for lunch from 12pm - 2.30pm and again for dinner at 6pm - 8.30pm daily, with daily specials from \$12 and weekly seasonal specials.

OPEN: 8am - 10pm Monday to Thursday
8am - 12pm Friday and Saturday
10am - 10pm Sunday
ADDRESS: 188 Sloane Street, Goulburn
PHONE: 02 4821 2498
EMAIL: info@southernrailwayhotel.com.au

www.southernrailwayhotel.com.au



SAMRAN THAI RESTAURANT

Serving fresh authentic Thai cuisine, Samran Thai Restaurant is located in the heart of Goulburn. Our tastefully decorated, spacious restaurant can cater for all of your needs. We are both fully licensed and BYO.

Our restaurant can accommodate a range of bookings from large groups to small intimate occasions. Our friendly and helpful team offer a service that is second to none.

Filled with a diverse array of delicious options, Samran Thai's menu will satisfy just about any hunger. At Samran Thai Restaurant you will experience traditional Thai cuisine prepared by our talented chefs using only the freshest produce.



Whether you choose to dine-in or order from our takeaway menu, you are sure to leave feeling satisfied.

We also offer free home delivery within designated areas in Goulburn.

OPEN: Monday to Sunday:
Lunch 10.30am - 3pm and
Dinner 4.30pm - 10pm
ADDRESS: 98 Auburn Street, Goulburn
PHONE: 02 4821 9800





GOULBURN SOLDIERS CLUB



The Soldiers Club is the newly renovated family-friendly venue in town, centrally located opposite Belmore Park with ample parking at the door and easy disabled access.

All day dining options are available at Poppy's or Tabatinga Café, and Diggers Brasserie is open for lunch and dinner. The Tabatinga play area will be a hit with the children.

Relax in one of our many indoor or outdoor lounge areas, take advantage of our range of TAB betting facilities or play a game of Keno. Saturday night is free live entertainment or borrow some cues and balls and catch up with friends over a game of snooker, or simply unwind in our Sports Lounge watching your favourite game.

The perfect venue for functions, private parties or events in one of the many function rooms.

OPEN: Sunday & Monday 10am - 10pm
Tuesday & Wednesday 10am - 11pm
Thursday 10am - 11.30pm
Friday & Saturday 10am - 12.30am
ADDRESS: 15 Market Street, Goulburn
PHONE: 02 4821 3300
EMAIL: info@goulburnsoldiers.com.au

www.goulburnsoldiers.com.au



GOULBURN WORKERS CLUB

Located in the heart of Goulburn, Goulburn Workers has entrances via both Auburn Street and McKell Place and plenty of parking on offer in our McKell Place carpark.

You will be spoilt for choice between the dining options and specials, weekly live entertainment, ticketed shows and daily/weekly promotions. There are 3 public bars including a cocktail lounge boasting 20 different products on tap, as well as full TAB and Keno facilities and a kids' area.

All this plus a courtesy shuttle bus service on Thursday, Friday and Saturday nights which will get you to and from the club in safety and style.

OPEN: Sunday to Wednesday 10am - 1am
Thursday to Saturday 10am - 3am
ADDRESS: 1 McKell Place, Goulburn
PHONE: 02 4821 3355
EMAIL: enquiries@goulburnworkers.com.au

www.goulburnworkers.com.au







Image: Madi Fitzgerald Photography

OCCASIONS

An eventful destination.

Host your group, plan your conference or design the wedding of your dreams – right here in beautiful country NSW.

Goulburn is perfectly situated – just two hours from Sydney and a short one hour drive from Canberra. Combine this with a country setting that offers great infrastructure, support services and breathtaking backdrops – Goulburn is the perfect choice for your next truly unique event – big or small.

Speak to the Groups Liaison Officer at the Visitor Information Centre who can develop a customised itinerary especially for your group.

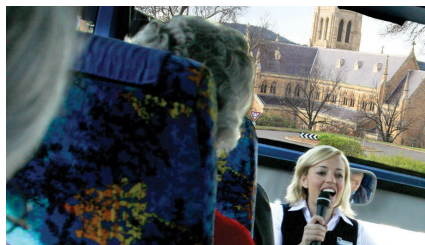
Pick up the Conferences, Event & Function Directory, or the Wedding Guide to help plan your special event.



While you're here...

- Bring your group for a day out following a personalised itinerary with your own host.
- Plan a visit with your car club – we welcome motorcycles, muscle cars, caravans, veterans and 4WD's. No matter what you have on wheels, you can steer it into Goulburn.

#rightnowingoulburn



GUIDED CITY TOUR

Available year round, our Guided City Tour allows visiting coach groups to enjoy a snapshot of our historic City of Goulburn without leaving the comfort of your coach.

An expert tour guide will board your coach and share with you the sights and stories of Goulburn. The tour is 90 minutes in duration with one stop along the way, providing a chance to stretch your legs and enjoy a spectacular sight of the City.

Best of all, everyone who is on a Guided City Tour receives 10% off selected items at the Goulburn Visitor Information Centre.

Book your Guided City Tour of Goulburn today!

TOUR TIMES: 9am - 3pm weekdays, 10am - 2pm weekends and Public Holidays (Closed Christmas Day).
ADDRESS: 201 Sloane Street, Goulburn
PHONE: 02 4823 4492 / 1800 353 646
EMAIL: info@goulburnaustralia.com.au

www.goulburnaustralia.com.au



MAP REF S1

GOULBURN & DISTRICT RACING CLUB

Goulburn Race Club offers something for everyone. Situated on 40 hectares with stunning views of the Cookbundoon mountain ranges, the Club is one of Goulburn's finest wedding reception and function venues, perfect for a range of special events.

We offer a range of race day packages, from the expansive picnic grounds where the family can run free, to the quaint sunset terrace tables that overlook the parade ring and have uninterrupted views of the final straight. For a bigger function we have the winning post marquee that can seat up to 250 guests!

OPEN: Office: Monday to Friday
8.30am - 4.30pm
ADDRESS: Racecourse Drive, Goulburn
PHONE: 02 4822 2222
EMAIL: admin@goulburnraceclub.com.au

www.goulburnraceclub.com.au



MAP REF I15

MERCURE GOULBURN

The region's premier functions and events facility, with flexible meeting rooms and state-of-the-art facilities. The hotel's event spaces cater for weddings, conferences, parties and meetings.

The team at Mercure Goulburn are experienced in event management and can tailor a package to suit your requirements including space, A/V equipment, catering and modern accommodation.

Call our dedicated Events Manager today to discuss how we can assist you with your function needs!

ADDRESS: 2 Lockyer Street, Goulburn
PHONE: 02 4822 5445
EMAIL: events@mercuregoulburn.com.au

www.mercuregoulburn.com.au



MAP REF N10

THE COLLECTIVE GOULBURN

The Collective Goulburn is a stimulating place to meet and work. The multi-purpose space comprises BDCU Alliance Bank, Co. Workspace, private offices and the ever popular Harvest Café.

In addition to supporting the needs of business, The Collective is also the perfect hub for local residents looking to commute less and live more! A space to connect, collaborate and be inspired.

The thoughtfully designed environment overlooks Belmore Park and is equipped with state-of-the-art facilities and super fast Wi-Fi. The team at The Collective Goulburn host a variety of events to bring the local community together, and look forward to meeting you soon. Call 0437 955 570 today to schedule a tour.

ADDRESS: 175/181 Auburn Street, Goulburn
PHONE: 0437 955 570

www.yourcollective.com.au



GOULBURN RECREATION AREA

The Goulburn Recreation Area occupies 45 hectares of Crown Land alongside the Mulwaree River, just minutes from the CBD. The Recreation Area is a diverse space that can be hired for almost any type of event or function.

The Recreation Area is home to a Multi-Function Complex. The Complex comprises two main structures, the Veolia Arena and the Grace Milsom Function Centre. The two centres are linked via an undercover walk way and are situated so they may be hired individually or jointly.

The Grace Milsom Function Centre by its versatility of design can be hired for any celebratory function or event. The space is also perfect for corporate training, events or seminars. Both centres are fully licensed and cater for all your needs.



MAP REF M14

The Goulburn Recreation Area is also home to a number of events and activities throughout the year including:

- The Goulburn Show
- Greyhound Racing
- Harness Racing and Training
- Basketball tournaments
- Indoor Hockey tournaments
- The Goulburn Rodeo and more.

ADDRESS: 47 Braidwood Road, Goulburn
PHONE: 02 4823 4538
EMAIL: council@goulburn.nsw.gov.au

www.goulburn.nsw.gov.au





LIVE

Make the move to country-cool.

Embrace a simpler, less stressful way of life, smell the clean air and settle into relaxed country living. With affordable housing, picturesque landscapes and two major cities close by (but not too close), as well as quality schooling, infrastructure and healthcare – Goulburn is the perfect place for your tree change.

Live in a City that is rich in heritage and natural beauty, with the conveniences of modern city indulges. There are multitudes of service clubs, sporting, artistic and special interest groups to become involved in, all of which will welcome you warmly in to the community.

Goulburn combines the best of both worlds – a country lifestyle with city benefits.



While you're here...

- Have a browse through Saturday's open houses to see what is available.
- Download a copy of the New Residents Guide at www.goulburnaustralia.com.au for a comprehensive directory of useful contacts and services.



ANGELLA STORRIER REAL ESTATE

Established locally in 2004, Angella Storrier Real Estate has grown with remarkable success. Our services cover residential, rural, commercial and industrial property sales and property management.

Angella, the sales people and property management team are committed to providing clients with honest and professional service and work to get the best result for their vendors and landlords. They also respect and care for the purchasers and tenants, who deserve full disclosure, respect and honesty.

Annually, Angella donates to 14 local primary schools as part of giving back to the community.

OPEN: Monday to Friday 8.30am - 5pm
Saturday 9am - 12pm
ADDRESS: 396 Auburn Street, Goulburn
PHONE: 02 4821 9842
EMAIL: admin1@angellastorrierrealestate.com.au

www.angellastorrierrealestate.com.au



RAINE & HORNE REAL ESTATE GOULBURN

Raine & Horne has been established in Goulburn for 25 years. In 2013, husband and wife team, Zeb and Courtne Alaia became the proud owners.

Quickly establishing a reputation as a market leader in the field of commercial and residential real estate, and quadrupling the size of their residential property management business (including commercial and storage sheds), has positioned them as one of the top three agents in Goulburn.

The use of contemporary marketing strategies, a strong commitment to business ethics and community relations, with a dedicated team Raine & Horne deliver a complete package of real estate services.

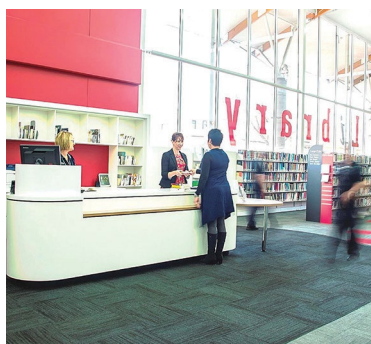
They are also able to provide expert advice in the areas of property valuation and auctioneering.

Raine & Horne Goulburn was the winner of the 2016 Excellence in Business Ethics award from the Goulburn Chamber of Commerce.

Sell your address without the stress with Raine & Horne Goulburn.

OPEN: Monday to Friday 9am - 5pm
Saturday 9am - 12.30pm
ADDRESS: 149 Auburn Street, Goulburn
PHONE: 02 4821 9088
EMAIL: Courtne.Alaia@goulburn.rh.com.au

www.rainandhorne.com.au



GOULBURN MULWAREE LIBRARY

Located close to the heart of the City, Goulburn Mulwaree Library provides a modern and friendly atmosphere for all members and visitors. Open every day, the Library offers a range of services including regular children's activities, monthly author talks and family research facilities. Full of comfy casual seating, and areas conducive to study and reading, members and visitors are able to use the Library computers and printing services, as well as unlimited Wi-Fi. The Library has its own private meeting room which is available for hire seven days a week.

The Paperback Café, which is conveniently located in the Library, is open Monday to Friday, providing hot and cold drinks and an array of locally-baked goods.

All members and visitors are welcome. Membership is available free of charge to all NSW residents, and provides access to a large range of materials, including eBooks, eAudio-Books and eMagazines.

You will find much more to do than you ever imagined at Goulburn Mulwaree Library, so be sure to visit and connect with others, learn new things and get inspired.

OPEN: Monday to Friday 10am - 6pm
Saturday 10am - 1pm
Sunday 2pm - 5pm
ADDRESS: 184-194 Bourke Street, Goulburn
PHONE: 02 4823 4435
EMAIL: library@goulburn.nsw.gov.au

www.gmlibrary.com.au



MARK BRADBURY LEGAL

29 Montague Street

02 4821 5529
goulburnlaw.com.au



MARK BRADBURY LEGAL

Located in Montague Street up from the Court House, Mark Bradbury Legal is a sharply-focussed, local law firm. With family ties to the Goulburn and Taralga districts going back five generations, Mark Bradbury moved to Goulburn from Sydney with his young family over 20 years ago and opened 'Mark Bradbury Legal' in 2014. Mark Bradbury Legal specialises in the following areas:

- Residential and rural conveyancing
- Sale and purchase of businesses
- Business succession planning
- Leases for both landlords and tenants
- Wills and estate planning
- Powers of attorney
- Appointments of Enduring Guardian
- Probate and estate administration
- Disputed estates

Matters in other practice areas are, in consultation with the client, referred to accredited specialist lawyers.

Mark Bradbury Legal derives great satisfaction from providing legal services to both long-time residents and businesses, and those who are either planning or have undertaken the move to Goulburn.

OPEN: Monday to Friday 9am - 5pm,
weekends by appointment.
ADDRESS: 29 Montague Street, Goulburn
PHONE: 02 4821 5529 / 0438 120 884
EMAIL: markbradbury@goulburnlaw.com.au



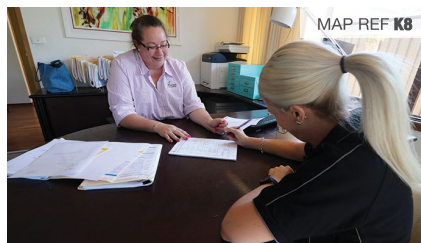
REGIONAL DEVELOPMENT AUSTRALIA SOUTHERN INLAND

Regional Development Australia Southern Inland (RDA Southern Inland) is part of a national network of 52 RDA Committees across Australia. These committees are made up of local leaders who work with all levels of government, business and community groups to support the development of regional Australia.

Our aim is to maximise economic development opportunities for the Southern Inland region by attracting new businesses and investment to the region, growing our local business potential and encouraging innovation. We also invite skilled migrants to apply for sponsorship to live and work in the Southern Inland region of NSW, under the Regional Sponsored Migration Scheme (RSMS).

OPEN: Monday to Friday 9am - 5pm
ADDRESS: Shop 5, 158-162 Auburn Street, Goulburn
PHONE: 02 4822 6397
EMAIL: admin@rdasi.org.au

www.rdasi.org.au



PHOENIX CONVEYANCING

Ready to buy a home or property in Goulburn? Phoenix Conveyancing can help. Whether you are buying a new home, an investment property, that lifestyle block you have always dreamed of, rural land, or selling any of the same, you need the services of a licensed conveyancer.

At Phoenix Conveyancing, we understand that property transactions can place stress and pressure on an already busy lifestyle. It is our aim to make the property conveyancing process as seamless and as stress-free as possible.

Get in touch with us, we are available for after-hours and weekend appointments. We can even come to you, within the Goulburn area.

OPEN: Monday to Friday 9am - 5pm
Saturday & after-hours by appointment.
ADDRESS: 72 View Street, Goulburn
PHONE: 02 4855 0448 / 0409 826 000
EMAIL: claire@phoenixconveyancing.com.au

www.phoenixconveyancing.com.au



GOULBURN CHAMBER OF COMMERCE

Are you wanting to meet and network with business owners in Goulburn?

The Goulburn Chamber of Commerce cultivates and nurtures business relationships by organising and supporting a variety of events:

- Monthly Chamber meetings
- Excellence in Business Awards
- Visits to businesses after hours
- Guest speakers at Chamber events
- Business breakfasts and forums

The Chamber's vision is to create a dynamic environment for business trade, growth, networking and training which facilitates a strong local economy for the benefit of all.

EMAIL: info@goulburnchamber.com.au

www.goulburnchamber.com.au



FIFE HOME LOANS

Fife Home Loans, incorporating Inland Finance Solutions, is an award-winning Home Loan Team that services regional NSW.

At Fife, we make it our business to understand your unique financial situation, supporting you with comprehensive professional advice and down to earth service.

We are here to help you navigate your way through the home loan process and for the life of your loan.

Fife is an accredited Member of Australian Finance Group and the Mortgage and Finance Association.

OPEN: 8.30am - 5pm Monday to Friday
ADDRESS: Level 1/91 Bourke Street, Goulburn
PHONE: 02 4822 8666
EMAIL: info@fife.com.au

www.fife.com.au







Image: Small Details Self-Contained Accommodation

STAY

Somewhere to rest your head.

Having too much fun to leave yet? Stay another day, we've got you covered. From intimate guest houses, B&B's, self-contained cosy heritage homes and pub stays to sleek and modern hotels – Goulburn has a broad range of accommodation to suit every occasion and budget.

Unwind in one of the many centrally located options, where it's an easy walk to catch live music or dine in the heart of the City.

Embrace the real country lifestyle, surrounded by rolling hills and untouched natural landscapes, along with a few friendly animals at a local farm stay.

Get even closer to nature in the comfort of your own tent, caravan or cabin at the camping options in the City or surrounding National Parks and reserves.

#rightnowingoulburn



While you're here...

- Use the free Wi-Fi provided in the CBD.
- Stay another day and explore more of what the region has to offer.



Please note that properties are self-rated. Keep an eye out for these icons for pet-friendly and accessible accommodation options.



MERCURE GOULBURN

Mercure Goulburn is a modern hotel, with contemporary designed guest accommodation, adjacent to the famous Big Merino, and just minutes from the Hume Highway and Goulburn CBD.

Unwind in our beautifully appointed hotel rooms and serviced apartments, with a variety of flexible bedding arrangements, superior inclusions and amenities. All guests are treated to free unlimited Wi-Fi, parking and Foxtel on large flat-screen smart TV's.

Enjoy breakfast 7 days a week, dinner Monday to Saturday in our acclaimed onsite Edge Bar & Restaurant, or choose from our in-room dining menu.



Modern hotel styling with welcoming country hospitality at the award-winning Mercure Goulburn.

ROOMS:

- Superior Queen/Twin
- Privilege King
- Apartments

RATING: ●●●●○
ADDRESS: 2 Lockyer Street, Goulburn
PHONE: 02 4822 5445
EMAIL: reservations@mercuregoulburn.com.au

www.mercuregoulburn.com.au



GOULBURN MOTOR INN

The Goulburn Motor Inn offers quality accommodation in a central location, ideal for leisure and business travellers. Situated at the Southern end of Goulburn's CBD the Goulburn Motor Inn is within easy walking distance to clubs, pubs, cafés and shopping centres.

At the Goulburn Motor Inn you will experience personal service, friendly staff and clean accommodation. Each of our rooms feature air-conditioning, heating, free Wi-Fi, tea and coffee making facilities, microwaves, ironing facilities and off-street parking. We look forward to welcoming you soon.

RATING: ●●●●○
ADDRESS: 80 Clinton Street (cnr Clinton & Bourke Streets), Goulburn
PHONE: 02 4821 4488
EMAIL: goulburnmotorinn@bigpond.com

www.goulburnmotorinn.com.au



MANDELSON'S OF GOULBURN

Premier luxury guesthouse accommodation located in the heart of Goulburn. Step back in time to a restored 1840 building of great historical significance. Our two guestrooms are beautifully furnished and have a modern shower ensuite, tea and coffee making facilities, TV, free Wi-Fi, central heating and air-conditioning. Off-street parking is available.

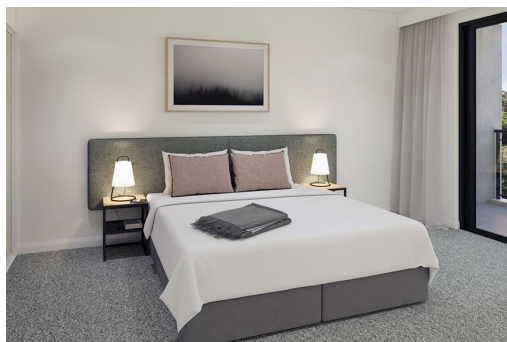
This guesthouse is ideal for travellers who want somewhere unique and a luxurious stay that is rich in history but with modern conveniences.

ROOMS:

- Executive Queen
- Executive Queen with Single

RATING: ●●●●●
ADDRESS: 160 Sloane Street, Goulburn
PHONE: 02 4821 0707
EMAIL: info@mandelsons.com.au

www.mandelsons.com.au



QUEST GOULBURN

Quest Goulburn, located at 27 Clinton Street, brings a stunning new accommodation experience to the Southern Tablelands of New South Wales as of November 2019.

If you're seeking accommodation in or around Goulburn, this new apartment hotel offers the perfect solution with a range of room types to meet everyone's needs.

Featuring 63 rooms including a mix of Studios, One and Two Bedroom Apartments, you can be assured a home away from home experience with the conveniences of laundry facilities and fully equipped kitchens (kitchenettes in the Studio apartments).



Business travellers and alike can also stay in touch with high-speed internet access, direct dial phones, in-room desks and access to the business lounge.

To explore more of what Quest has to offer, simply visit: questgoulburn.com.au.

RATING: ●●●●○
ADDRESS: 27 Clinton Street, Goulburn
PHONE: 1800 334 033
FAX: +61 3 8699 1555
EMAIL: questgoulburn@questapartments.com.au

www.questgoulburn.com.au





WILLOWS MOTEL

With a friendly welcome we invite you to Willows Motel, just off the Hume Highway at the northern entrance.

Set on spacious grounds, Willows Motel is a quiet retreat amongst cottage gardens that brings 4 Star accommodation to the country. Situated only minutes from the CBD, with easy access to historic attractions, Wakefield Park, racecourses, Police Academy and more.

A perfect location for a leisure stay, a romantic escape or business trip. With 22 modern, non-smoking, ground floor units, designed to high standards with quality inclusions. Each room features comfortable bed/s, a kitchenette with microwave, dining suite, LED TV's, air-conditioning, free Wi-Fi and Foxtel channels. Room service breakfast is available on request, as well as on-door delivery dining with a selection of cuisines from local restaurants.



MAP REF R9

24 hour check-in, free parking for trailers, caravans and large vehicles, guest laundry and BBQ facilities also. Please see our reviews on Trip Advisor.

ROOMS:

- Deluxe Queen/Twin
- Executive Queen/King
- Family/ 2 Room Suites
- Spa Suites
- 2 purposely designed pet-friendly rooms available on request.

RATING: ●●●●○
ADDRESS: 21 Sydney Road / 1 Day Street, Goulburn
PHONE: 02 4821 4322
EMAIL: Stay@willowsmotel.com.au

www.willowsmotel.com.au



MAP REF N11

GOULBURN VISITOR INFORMATION CENTRE

Whether you're passing through or here for an extended stay, the Goulburn Visitor Information Centre is equipped with 8 Tesla Super Chargers and an Electric Vehicle Charger (suits most common electric vehicles).

Visitors travelling to Goulburn with fully self-contained caravans in tow can also make use of the limited, long vehicle parking spaces available at the rear of the building. The spaces are available on a first come, first served basis (no bookings), for overnight stays only, between the hours of 5pm and 9am.

OPEN: 9am - 5pm weekdays 10am - 4pm weekends & Public Holidays (Closed Christmas Day).
ADDRESS: 201 Sloane Street, Goulburn
PHONE: 02 4823 4492 / 1800 353 646
EMAIL: info@goulburnaustralia.com.au

www.goulburnaustralia.com.au



BEST WESTERN PLUS GOULBURN



Our serviced apartments and superior accommodation are conveniently located 600m from the central business district.

Close to Goulburn's historic heart, entertainment options and trendy cafés.

Join us for country hospitality with city style.

Free parking and no credit card fees.

FACILITIES:

- Free Wi-Fi and Foxtel
- Free off-site gym access
- Free parking
- Indoor heated pool
- Guest laundry

CASCADES RESTAURANT:

- Open breakfast, lunch and dinner.

TERRACE GARDEN:

- Casual outdoor dining

CONVENTION CENTRE:

- Chantilly Room
- Argyle Room
- Boardroom
- The Lobby

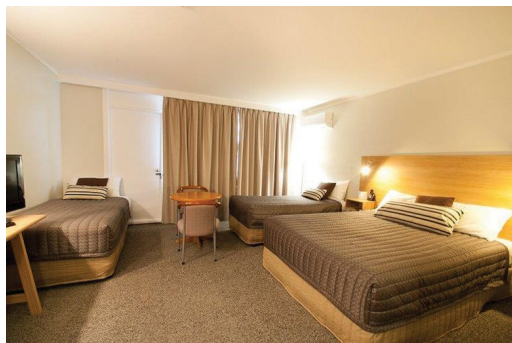
ROOMS:

- Ground Floor Accessible Units
- Studio Apartments
- 2 and 3 Bedroom Apartments
- King Spa Suites

RATING: ●●●●○
ADDRESS: 77 Lagoon Street, Goulburn
PHONE: 02 4821 2422
FAX: 02 4821 9910
EMAIL: goulburn@bestwestern.com.au

www.bestwestern.com.au/goulburnhotel





POSTHOUSE MOTOR LODGE

Recently refurbished, all of the Posthouse Motor Lodge rooms are large, spotlessly clean, with fridge, tea and coffee facilities, hydronic heating and air-conditioning. All rooms also have internal access to the restaurant and reception.

The popular Blue Plate Restaurant is open 6 days (closed Sunday night) for breakfast and dinner with room service also available. Relax in the restaurant and enjoy the great À La Carte meals and service after a day at work or travelling.

Just minutes' walk to the main shopping centre, with easy access to clubs, pubs, cafés, speciality shops, historic attractions and much more. Whether you're visiting for motor racing at Wakefield Park, greyhound racing, horses or trotting, the Posthouse Motor Lodge is situated perfectly.



Check out the many reviews on TripAdvisor and booking.com, we are sure you will enjoy your stay with us.

ROOMS:

- Double Rooms
- Twin Rooms
- Family Rooms
- Spa Suites

RATING: ●●●●○
ADDRESS: 1 Lagoon Street, Goulburn
PHONE: 02 4821 5666
EMAIL: posthouse@internode.on.net

www.posthousemotorlodge.com.au



GOULBURN CENTRAL MOTOR LODGE

Goulburn Central Motor Lodge offers Standard and Deluxe rooms providing our guests with clean and comfortable accommodation whilst being in a central location.

Positioned on Verner Street adjacent to Sts Peter & Paul's Cathedral, close to a wide range of eateries and many shops within the CBD, we provide 24-hour check-in, off-street parking, fridge, TV, tea and coffee making facilities, free Wi-Fi, and all with friendly and personal service at a competitive price.

Single, Twins, Queens, Family and Adjoining rooms available.

RATING: ●●●●○
ADDRESS: Cnr Auburn & Verner Streets, Goulburn
PHONE: 02 4821 1655
EMAIL: goulburncentral@ozemail.com.au



BAKEHOUSE MOTEL

The Bakehouse Motel is ideally located one minute from the Hume Highway on the south side of Goulburn and is situated next to Trappers Bakery with Bunnings, McDonalds, Subway and two major service centres nearby.

All rooms feature a queen and single bed with the exception of the Family room which has a queen and 5 singles.

Each room features split system air-conditioning and has double glazed windows to ensure you a comfortable and quiet stay.

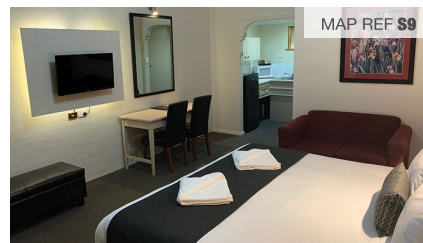
Wi-Fi is available free of charge during your stay. All rooms are ground floor and parking is in close proximity to your room. Business facilities are available during office hours.



The Bakehouse Motel is across from Goulburn's famous Big Merino, just a short drive to Goulburn's CBD. The Motel is close to sporting facilities and Wakefield Park, historic buildings and local attractions.

RATING: ●●●●○
ADDRESS: 4 Sowerby Street, Goulburn
PHONE: 02 4821 7666
EMAIL: bakehousemotel@goulburn.net.au

www.bakehousemotel.com.au



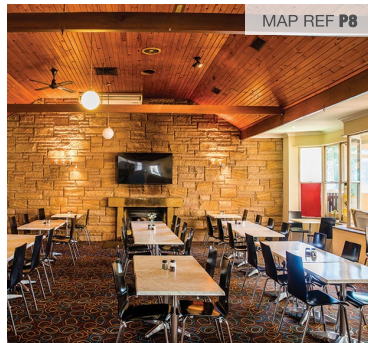
GOULBURN HERITAGE MOTOR INN

With 24-hour check-in, the outstanding Heritage Motor Inn is the first motel in Goulburn when approaching from Sydney. Away from the noise of central Goulburn, guests have all they need at the motel with the licensed restaurant, free on-site parking (including large vehicles and trailers), laundry facilities and Wi-Fi.

Clients can choose Standard or Superior (King, Twin or Family) rooms. The air-conditioned rooms have a kitchenette, toaster, microwave, bar refrigerator, tea/coffee facilities, electric blankets and cable TV.

ADDRESS: 69 Sydney Road, Goulburn
PHONE: 02 4821 9377
EMAIL: info@heritagegoulburn.com.au

www.heritagegoulburn.com.au



MAP REF P8

LILAC CITY MOTOR INN & STEAKHOUSE

Featuring free unlimited high-speed NBN Wi-Fi and including free continental breakfast, the smoke-free Lilac City Motor Inn and Steakhouse offers 28 recently refurbished rooms for all guests. Located in quiet surroundings, with ample at-your-door parking and off-street parking for trailers, caravans and trucks; but still close to Goulburn CBD, shops and sporting venues (around 10 minutes' walk or a 1 minute drive).

All air-conditioned accommodation features LCD TV's with satellite Foxtel channels, a microwave, a refrigerator, iron and tea/coffee making facilities. A private bathroom with a hairdryer is standard in all rooms and suites. Spacious family rooms are available for up to 7 people. A restaurant and bar, conference rooms and concierge services are available at this motel. We are pet-friendly for certain rooms, but please let us know in advance.

Please ring us for the best rates to make your reservations today!

ROOMS:

- Standard Queen / Twin
- Deluxe Queen / Twin
- One Room Family Room
- Two Room Family Room

Pets allowed – conditions apply.

RATING:
OPEN:



● ● ● ● ●

Reception - 7 days 8am to 9pm
(24/7 for all bookings, late check-in available).

Steakhouse Restaurant 6pm - 8.15pm

ADDRESS: 126 Lagoon Street, Goulburn
PHONE: 02 4821 5000
EMAIL: lilaccitygoulburn@gmail.com

www.lilaccitymotorinn.com.au



PELICAN SHEEP STATION

Pelican Sheep Station is a fully working family farm on 720 hectares with cropping, sheep and cattle.

We offer two styles of Accommodation:

Self-contained Cabins x 4, sleeps up to 6 people. Large renovated 'rustic shearer's quarters' called The Lodge that has a large common room with cooking facilities, lounges, TV and a large fridge and freezer with 4 separate units that have 2 bedrooms, 1 bathroom in each. These units can sleep up to 6 people and are ideal for long-term guests or large groups.

ADDRESS: 4844 Braidwood Road, Goulburn
PHONE: 02 4821 4668
EMAIL: pelican@pelicansheepstation.com.au

www.pelicansheepstation.com



GOVERNOR'S HILL CARAPARK

Governor's Hill Carapark is nestled in a quiet bush setting just 2.7km north of the Goulburn CBD on the Highway exit, and is part of the Big 4 Holiday Parks Chain. The park has kerbed and tar sealed roads, a spacious amenities block and a laundry.

The biggest attraction of the park is the G-scale model railway, which fascinates children from the ages of one to ninety. It's also easy to keep the kids entertained in the playground or the games room, whilst you enjoy a sausage sizzle with your family and friends with the use of the free BBQ on the verandah of the fully-equipped camp kitchen. The park also has a kiosk plus free wireless internet access.

Governor's Hill Carapark is an ideal spot for an overnight stay, or a longer stay for those wishing to experience and explore the Goulburn district and

enjoy its hospitality.

Dogs allowed with prior management approval.

ROOMS:

- 2 Bedroom Cabins
- Studio Cabins
- Standard Cabins
- All Purpose Cabin
- Workers Cabins
- Ensuite Sites & Powered Sites

RATING:
ADDRESS: 77 Sydney Road, Goulburn
PHONE: 02 4821 7373
EMAIL: governorhillcp@bigpond.com.au



● ● ● ● ●

77 Sydney Road, Goulburn

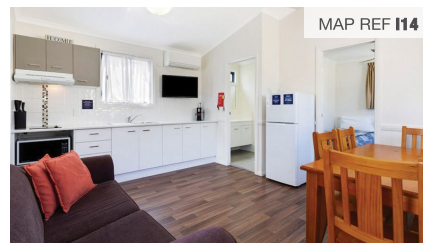
02 4821 7373

governorhillcp@bigpond.com.au

www.big4.com.au/caravan-parks/nsw/capital-country/governors-hill-carapark



MAP REF T9
BIG 4
HOLIDAY PARKS



MAP REF I14

GOULBURN SOUTH CARAVAN PARK

Situated in a natural bush parkland setting, Goulburn South Caravan Park offers a variety of affordable family and pet-friendly accommodation that delivers all the comfort and convenience of a home away from home.

Our large powered and unpowered sites are suitable for all types of caravans, RV's and motorhomes, whilst our camping sites are set amongst the trees, allowing you to enjoy the bush all within walking distance of Goulburn city centre.

We look forward to welcoming you to the Park and providing you with the best experiences possible. Pets allowed, conditions apply.

OPEN: 8.30am - 6pm
ADDRESS: 149 Hume Street, Goulburn
PHONE: 02 4821 3233
EMAIL: goulburnsouthcp@
southerncrossparks.com.au

www.goulburnsouthcp.com.au





Image: Towrang Farm Stay





WANDER

Towns and villages.

Get off the highway onto the roads less travelled to experience the charm and unique character of the towns and villages surrounding Goulburn.



MARULAN

Marulan is the only town in the world that is situated on the 150th meridian which is used as the basis for Australian Eastern Standard Time; a sculpture depicting this interesting fact is located in the town centre.

Marulan features historic buildings dating back to the 19th century, with the township steeped in history including stories of bushrangers holding up traffic travelling north to Sydney from the southern goldfields.

A self-guided tour of historic Marulan is available.

www.discovermarulan.com.au



BUNGONIA

The Bungonia district was settled in the early 1820s, with the Bungonia caves systems (some of the deepest on the Australian mainland) being discovered in 1829.

This village is the gateway to the Bungonia National Park, celebrated for its beautiful views with effortlessly accessible lookouts and walking tracks to cater for all fitness levels.



WINDSELLAMA

Windellama is a rural community with an active progress association that hosts monthly markets, and an historical society which operates a small museum housed in a replica building of the 1880s school.



TALLONG

The original settlement of Barber's Creek was renamed in the early 20th century after an Aboriginal word meaning "spring of water". Highlights for visitors include the stunning views of Morton National Park – especially the Shoalhaven Gorge and River seen from Long Point and Badgery's Lookouts.

The district's early development owes a lot to the hard labour of convicts, with some of their constructions still surviving today.

www.goulburnaustralia.com.au



TOWRANG

Towrang was a major penal establishment which drove the construction of the Great South Road by chain-bound convicts.

Many of the remarkable constructions can be still accessed today, with a self-guided Towrang Stockade brochure available from the Goulburn Visitor Information Centre.



LAKE BATHURST

Situated south of Goulburn, along Tourist Drive 8, Lake Bathurst is an attractive tree-lined village with significant 19th century buildings that remain in good condition today.



TARAGO

Just down the road is Tarago, home of the Loaded Dog Hotel, established in 1848. It was a meeting place and safe house for many bushrangers and much of the Hotel's original stone, brick and wood of the era remain.

Nearby is the old Woodlawn Mine, which is given life today as a bioreactor. Tours of the Woodlawn Bioreactor, Lake Bathurst, the village's Museum and WWII fuel stores can be arranged via the Goulburn Visitor Information Centre.

www.goulburnaustralia.com.au



CANBERRA REGION TABLELANDS

The Canberra Region Tablelands boasts an impressive variety of world class food and wine offerings, an eclectic heritage and arts scene and a diverse range of outdoor experiences, just waiting to be explored.



Upper Lachlan

Well named as the 'Shire of Villages', Upper Lachlan is dotted with picturesque townships along the Great Dividing Range, each with their own stories. The major townships of Gunning, Crookwell and Taralga offer the visitor an excellent base to explore the countryside, caves and waterways.

Hilltops Region

The Hilltops Region includes Young, Harden-Murrumburrah, Jugiong and Boorowa. It yields some of Australia's finest food and wine. Through wide open country and intimate valleys, our towns and villages offer the visitor heritage buildings, a varied retail experience for shopping enthusiasts and the warmth of country hospitality.














Yass Valley

Yass Valley is bursting with wonderful experiences. With a proud heritage connection to early rural Australia, a modern and well renowned food and wine offering, a thriving arts scene and boutique shopping, touring around Yass Valley is an experience not to be missed. Exploring the region's beautiful, historical towns and villages of Yass, Gundaroo, Murrumbateman and Bowning is sure to captivate the young and the young at heart.

Queanbeyan Region

Heading east out of Canberra, discover the emerging food and wine region of Queanbeyan-Palerang, with essential stopovers at the impressive galleries of Bungendore and the historic main street of Braidwood, surrounded by many opportunities to explore the great outdoors.

GOULBURN CBD

Wi-Fi

Toilets

Accessible

Picnic facilities

Train Station

Parking

Police

Visitor Information Centre

Council Civic Centre

Library

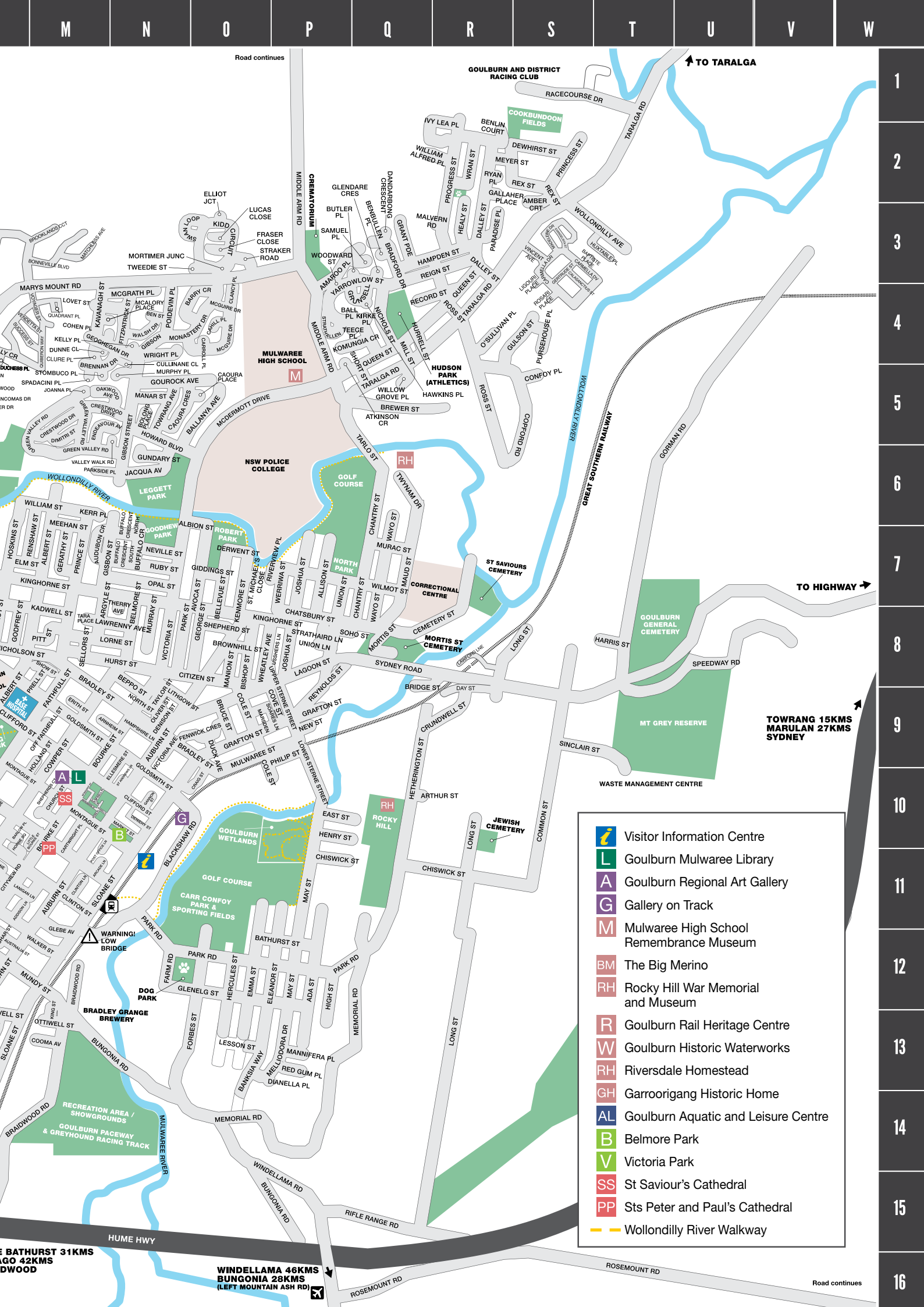
Art Gallery

Post Office

Supermarket







- Visitor Information Centre
- Goulburn Mulwaree Library
- Goulburn Regional Art Gallery
- Gallery on Track
- Mulwaree High School Remembrance Museum
- The Big Merino
- Rocky Hill War Memorial and Museum
- Goulburn Rail Heritage Centre
- Goulburn Historic Waterworks
- Riversdale Homestead
- Garroorigang Historic Home
- Goulburn Aquatic and Leisure Centre
- Belmore Park
- Victoria Park
- St Saviour's Cathedral
- Sts Peter and Paul's Cathedral
- Wollondilly River Walkway

INDEX TO GOULBURN CITY STREETS

A

Abbey Road	H13	Combermere Street	K11	Hampden Street	Q3	Maud Street	Q7	Rossville Road	H9
Ada Street	P12	Common Street	S11	Hampshire Lane	N9	May Street	P12	Ruby Street	N7
Adam Street	J11	Confoy Place	S5	Harris Street	T8	Mayor Street	K10	Run-o-Waters Drive	B15
Addison Lane	L11	Constantina Circuit	K7	Hawkins Place	Q4	Mazamot Road	G16	Ruse Street	K5
Addison Street	J10	Cooinda Close	J10	Hawthorne Street	L6	McAlory Place	N4	Russell Lane	N10
Albert Street	M7	Cooma Avenue	M13	Hazelwood Place	L5	McDermott Drive	O5	Ryan Place	R2
Albion Street	O6	Copford Road	S5	Healy Street	R3	McGuire Drive	O4		
Alice Street	K14	Cormandel Street	K11	Heath Street	L5	McGrath Place	N4	S	
Allison Street	P7	Cottonwood Ave	J7	Henderson Street	H10	McKell Place	M10	Salford Street	K11
Amaroo Place	P3	Cove Street	P9	Henry Street	P10	McNaught Street	M10	Samuel Place	Q3
Amber Court	S2	Cowper Avenue	L10	Hercules Street	O12	Meehan Street	M7	Sanctuary Drive (North)	J6
Angela Place	K7	Cowper Street	M9	Hetherington Street	Q9	Melliodora Drive	P13	Sanctuary Drive (South)	J8
Arcade Lane	N11	Cowrang Place	F15	High Street	P13	Memorial Road	Q12	Sanita Street	K10
Argyle Street	M7	Craig Street	O10	Hill Street	K14	Meyer Street	R2	Sellors Street	M8
Arnheim Street	N9	Cressy Street	J11	Hill View Road	L11	Mewburn Drive	K5	Shannon Drive	G12
Arthur Street	Q10	Crestwood Drive	M5	Hinchcliffe Close	K7	Middle Arm Road	P4	Shepherd Street	O8
Ash Close	L4	Crookwell Road	K4	Hoddle Avenue	K8	Mill Street	Q4	Shepherds Court	M10
Aston Martin Drive	L3	Crundwell Street	R9	Hogg Place	L4	Mistful Park Road	K4	Short Street	Q5
Atkinson Crescent	P4	Cullinane Close	N4	Holland Street	M9	Mitchell Street	J4	Show Street	M8
Auburn Street	N9			Hollis Avenue	K13	Monastery Drive	O4	Sinclair Street	S9
Audubon Crescent	M7	D		Home Square	L10	Montague Street	N10/L10	Sloane Street	L13
Australia Street	L12	Dalley Street	R3	Hoskins Street	L7	Moore Place	K7	Slocumbe Street	I10
Avoca Street	O7	Dandarbong Crescent	Q3	Hovell Street	L13	Mortimer Junction	O3	Snowgums Drive	J

B

Ball Place	Q4	Day Street	R9	Hunter Street	K4	Mount Street	L8	Sowerby Street	H15		
Ballanya Avenue	O5	Deccan Street	K9	Hurrell Street	Q4	Mullen Street	K8	Spadacini Place	M5		
Ballina Street	L12	Deniehy Lane	N10	Hurst Street	N8	Mulwarae Street	O9	Speedway Road	T8		
Banksia Way	O13	Denison Street	N9	I	H6 R1	Mundy Street	M12	Sports Way	J14		
Baptiste Place	T3	Derwent Street	O7			Murac Street	Q7	St Andrews Lane	N10		
Barber Street	K8	Dewhurst Street	S2			Murphy Place	N5	St Aubyn Road	L5		
Barlow Place	L10	Dianella Place	P13	Ibis Road		Murray Street	N8	St Michaels Close	O7		
Barry Crescent	O4	Dimitri Street	M5	Ivy Lea Place				Stalker Street	K10		
Bathurst Street	P12	Dixon Street	K8	J	N6 J13 M5	N	K6 N7 P9	Stombuco Place	M5		
Baxter Drive	K5	Donnelly Crescent	L4					Jacqua Avenue	Straker Road	O3	
Bellevue Street	O7	Dossie Street	L14					James Place	Strathaird Lane	P8	
Belmore Street	N8	Duck Avenue	O9	Joanna Place	S4	New Street	L7	Strathallan Crescent	P4		
Ben Street	N4	Ducks Lane	G14	Jockey Court	L10	Newton Street	Q4	Success Street	L4		
Benbullen Place	Q3	Duke Street	J10	John Street	P8	Nichols Street	L8	Swan Loop	O3		
Benjamin Place	L5	Dunne Close	M4	Joshua Street	J14	Nicholson Street	H13	Sydney Road	Q8		
Benlin Court	R2			Jubilee Avenue		Nicole Place	M7				
Bennet Street	K13	E	P10	K	M8 M4 C9	O	M5 K10 N9	T	J14 C14		
Beppo Street	N8										
Bergmark Street	M10										
Betts Street	K10	East Street	J11	Kadwell Street	M4	Oakwood Avenue	M5	Tall Timbers Drive	J7		
Beverly Close	K7	Edward Street	L13	Kavanagh Street	C9	O'Brien Street	K10	Tallowood Street	M8		
Bigwood Place	K4	Eldon Street	O12	Keating Road	N4	Oliver Street	N9	Tara Place	Q4		
Bishop Street	O8	Elizabeth Street	J12	Kelly Place	K13	Opal Street	N7	Taralga Road	Q6		
Bishophorpe Lane	H8	Ellesmere Street	N9	Kelso Street	O7	Off Addison Street	K10	Tarlo Street	N9		
Blackshaw Road	N11	Elliot Junction	O3	Kenmore Street	K10	Off Faithful Street	M9	Taylor Street	Q4		
Bladwell Place	B13	Elm Street	L7	Kent Street	M6	O'Sullivan Place	R4	Tece Place	L6		
Bolong Place	N5	Emma Street	O12	Kerr Place	O3	Ottivell Street	M13/L13	The Avenue	N8		
Bonnett Drive	F13	Emmerson Street	J11	Kidd Circuit	M13	Oxley Crescent	J5	Therry Avenue	K7		
Bonneville Boulevard	M3	Endeavour Avenue	M5	King Street	H6	Oxley Street	I13	Thomas Place	L11		
Boomerang Drive	I12	Erith Street	M9	Kingfisher Road	M7			Thorne Avenue	N5		
Bourke Street	M10	Evangelista Street	S3	Kinghorne Street	J12			Towrang Avenue	J7		
Bowerman Road	C12	Evans Street	J10	Kings Way	Q4	P	R3 G13 O12	Turner Street	N5		
Bradford Drive	Q3			Kirke Place	D13			Paradise Place	R3	Tweedie Street	O3
Bradley Street	M8	F	M8	Knowlman Road	J12			Park Close	G13	Twynam Drive	Q6
Braidwood Road	M14			Knox Street	Q4			Park Road	O12		
Brennan Drive	M4			Komungla Crescent				Park Street	N8		
Brendas Drive	K7	Farm Road	N12			Parkside Place	M6	U			
Brewer Street	Q5	Farquar Street	L12			Paton Place	K7		Union Lane	P8	
Bridge Street	Q8	Fenwick Crescent	O9	L	P8 K7 K5	Pencomas Drive	L5		Union Street	P7	
Brooklands Circuit	M3	Fife Place	G14			M6	Upper Sterne Street	P9			
Broughton Street	L13	Finlay Road	K14			K5	Usshers Lane	P8			
Brownhill Street	O8	Fitzpatrick Street	N4	Lagoon Street	L11						
Bruce Street	O9	Fitzroy Street	L7	Lamarra Place	J13	Phillip Street	M8	V			
Bryant Street	K9	Foord Road	G10	Lambert Drive	K13	Pitt Street	H6		Valley Walk Road	N5	
Buffalo Crescent East	N7	Forbes Street	O13	Lanigan Lane	R8	Platypus Circuit	L10		Vendetta Street	M4	
Buffalo Crescent North	N7	Forster Street	L8	Lansdowne Place	N8	Pockley Road	E13	Verner Street	L10		
Buffalo Crescent South	N7	Fox Close	K4	Lawford Lane	L5	Poidevin Place	N4	Victoria Avenue	N9		
Bungonia Road	N13	Francis Street	J11	Lawrenny Avenue	O13	Post Office Lane	M10	Victoria Lane	L10		
Burge Street	H10	Franklin Street	K5	Ledger Street	M10	Prell Street	M8	Victoria Parade	L10		
Bushs Lane	G12	Fraser Close	O3	Leeson Street		Prince Street	M7	Victoria Street	N8		
Butler Place	Q3	Furner Street	K12	Leonard Rise		Princes Avenue	J12	View Street	K8		
				Ligouri Place		Princess Street	S2	Village High Road	L8		
				Lilac Place		Progress Street	B2				

C

ahill Place	O4	Gallaher Place	H2	Lisgar Street	K13		Voyager Street	M4	
Calasancius Street	S3	Gannon Street	N10	Lithgow Street	N9				
Caoura Crescent	N4	Gardiner Road	K4	Little Addison Street	L11	Q			
Caoura Place	N5	Garfield Avenue	J11	Little Bourke Street	M10	Quadrant Place	M4		
Carmella Drive	S3	Garrooringang Road	J15	Llewellyn Avenue	K9	Queen Street	R4	W	
Carr Street	H12	Drive	N4	Lockyer Street	I15	Quiberon Way	M4	Walker Street	M12
Carramar Way	I11	George Street	O8	Loder Street	H10			Walsh Drive	N4
Carroll Place	O4	Gerathy Street	M7	Loloma Place	B16			Waterfront Place	I6
Catwright Place	M10	Gertrude Street	S3	Long Street	R15/S8	R		Waterview Road	D14
Cartchart Street	I10/I13	Gibson Street	N4/N7	Lorne Street	P9	Racecourse Drive	T1	Wayo Street	P8
Cemetery Street	R7	Giddings Street	O7	Lower Sterne Street	N8	Range Road	H8	Werriwa Street	Q7
Chalker Ridge	C12	Gilmore Street	J9	Lucas Close	O3	Record Street	Q4	Wheatley Avenue	O8
Chantilly Court	I12	Glebe Avenue	M12			Redman Circuit	L6	Wheoo Road	J9
Chantry Street	Q6	Glebe Street	L12			Red Gum Place	P13	William Alfred Place	R2
Chatsbury Street	P8	Glendare Crescent	Q3	M		Reign Street	Q3	William Street	M6
Chinamans Lane	G3	Glenelf Street	O12	Macalister Drive	K8	Renish Street	M7	Willow Grove Place	Q5
Chisholm Street	J13	Godfrey Street	L8	Macquarie Street	K8	Rex Street	S2	Wilmot Street	Q7
Chiswick Street	P11/R11	Goldsmith Street	N10	Madeleine Drive	S3	Reynolds Street	P8	Windellama Road	P16
Churchill Street	J13	Gorman Road	T7	Major Drive	K8	Rhoda Street	I10	Wollondilly Avenue	S3
Church Street	M10	Gourcock Avenue	N5	Malvern Road	R3	Ridge Street	H11	Woodward Street	P4
Citizen Street	O8	Grafton Street	O9	Manar Street	N5	Rifle Range Road	Q15	Wran Street	R2
City View Road	L11	Grant Parade	Q3	Manchester Lane	K11	River Street	I8	Wright Place	N4
Clancy Place	O4	Gray Avenue	K13	Manfred Place	K11	Rivergum Place	J6	Wyatt Street	J10
Clifford Street	N10	Green Valley Road	M6	Manion Street	O8	Riverview Place	P7		
Clinton Lane	M11	Greendale Court	C16	Mannifera Place	P13	Robinson Close	I13	Y	
Clinton Street	M11	Greenaway Place	J8	Market Street	N10	Robinson Street	J12	Yarrowlow Street	P4
Clure Place	M4	Grunsell Crescent	Q4	Marsden Street	O9	Rosari Place	S4		
Clyde Street	J7	Gulson Street	S4	Martyr Street	K12	Rose Street	I11		
Cohen Place	N4	Gundry Street	N6	Mary Martin Drive	J5	Rosedale Court	I12		
Cole Street	O9	Gurrundah Road	F9	Mary Street	L12/H12	Rosemont Road	Q16		
College Street	J10			Marys Mount Road	L3	Ross Place	M10		
				Matchless Avenue	M3	Ross Street	R4		
						Rossi Place	K7		

S

Salford Street	K11
Samuel Place	Q3
Sanctuary Drive (North)	J6
Sanctuary Drive (South)	J8
Sanita Street	K10
Sellers Street	M8
Shannon Drive	G12
Shepherd Street	O8
Shepherds Court	M10
Short Street	Q5
Show Street	M8
Sinclair Street	S9
Sloane Street	L13
Slocombe Street	I10
Snowgums Drive	J7
Soares Lane	P9
Soho Street	P8
Sowerby Street	H15
Spadacini Place	M5
Speedway Road	T8
Sports Way	J14
St Andrews Lane	N10
St Aubyn Road	L5
St Michaels Close	O7
Stalker Street	K10
Stombuco Place	M5
Straker Road	O3
Strathaird Lane	P8
Strathallan Crescent	P4
Success Street	L4
Swan Loop	O3
Sydney Road	Q3

T

Tait Crescent	J14
Tall Timbers Drive	C14
Tallowood Street	J7
Tara Place	M8
Taralga Road	Q4
Tarlo Street	Q6
Taylor Street	N9
Teece Place	Q4
The Avenue	L6
Therry Avenue	N8
Thomas Place	K7
Thorne Avenue	L11
Towrang Avenue	N5
Turner Street	J7
Tweedie Street	O3
Twynnam Drive	Q6

U

Union Lane	P8
Union Street	P7
Upper Sterne Street	P9
Usshers Lane	P8

v

Valley Walk Road	N5
Vendetta Street	M4
Verner Street	L10
Victoria Avenue	N9
Victoria Lane	L10
Victoria Parade	L10
Victoria Street	N8
View Street	K8
Village High Road	L7
Village Road	L7
Vincent Avenue	S3
Voyager Street	M4

w

Walker Street	M12
Walsh Drive	N4
Waterfront Place	I6
Waterview Road	D14
Wayo Street	Q7
Werriwa Street	P8
Wheatley Avenue	O8
Wheeo Road	J9
William Alfred Place	R2
William Street	M6
Willow Grove Place	Q5
Wilmot Street	Q7
Windellama Road	P16
Wollondilly Avenue	S3
Woodward Street	P4
Wran Street	R2
Wright Place	N4
Wyatt Street	J10

Y

Yarrowlow Street P4

REGIONAL MAP



TIMES TO GOULBURN

Location	Distance	Driving Times	
Albury	357km	3 hours	28 minutes
Batemans Bay	145km	1 hour	52 minutes
Bathurst (via Taralga)	190km	2 hours	24 minutes
Bathurst (via Crookwell)	187km	2 hours	27 minutes
Bowral	79km		56 minutes
Braidwood	85km	1 hour	
Bungonia	28km		24 minutes
Canberra	90km	1 hour	
Cooma	203km	2 hours	21 minutes
Cowra	208km	2 hours	18 minutes
Crookwell	45km		32 minutes
Dubbo	547km	6 hours	7 minutes
Katoomba	218km	3 hours	
Lithgow	278km	3 hours	28 minutes
Melbourne	680km	6 hours	35 minutes
Mittagong	84km		54 minutes
Newcastle	346km	3 hours	46 minutes
Nowra (via Kangaroo Valley)	126km	1 hour	42 minutes
Nowra (via Windellama)	146km	2 hours	
Oberon	144km	1 hour	50 minutes
Queanbeyan	103km	1 hour	12 minutes
Sydney CBD	195km	2 hours	
Sydney Airport	182km	1 hour	52 minutes
Taralga	45km		39 minutes
Thredbo	299km	3 hours	34 minutes
Wagga Wagga	261km	2 hours	40 minutes
Wollongong	152km	1 hour	40 minutes
Yass	83km		55 minutes





@goulburnaustralia #rightnowingoulburn