

Goulburn

Hosting a Motorsport Event



GOULBURN
Australia

Goulburn - an attractive and central city to host your Motorsport Event

Goulburn is ideally set up to manage all aspects of your event from show 'n' shine to judging and observation runs, with fantastic facilities including Wakefield Park and Pheasant Wood Circuit.

Be enticed by the country charm of Australia's first inland City. Perfectly positioned just two hours from Sydney, an hour from Canberra and just under two hours to the coast - a world rich in heritage, culture, natural beauty and adventure is ready to be explored.



Initial contact

Goulburn Visitor Information Centre – primary contact point for initial information on your event.

Contact should be made as soon as possible so that we can best accommodate your event. Many aspects of hosting a car or motorbike event require Council approvals, so getting in early will help to make your event run smoothly.

Once your event details are finalised, the Visitor Information Centre can promote it through various channels including www.goulburnaustralia.com.au, monthly calendar of events and weekly what's on notifications.

For further information and assistance please refer to the contacts below.

Website - www.goulburnaustralia.com.au

Email - info@goulburnaustralia.com.au Phone – (02) 4823 4492

Club Runs around Goulburn

Escape the City and venture off the beaten track.

Change gears and cruise along an open winding road to a quite country village. We have an array of runs that can be managed in a day, with the bonus of some wonderful associations on hand to spoil you with delicious home cooked treats and meals, and of course the local pubs are on hand serving up delicious food.

Goulburn has a range of nearby towns and interesting places to visit. Daily runs can be organised to surrounding towns and villages including Crookwell, Gunning, Bungonia, Tarago and Taralga. All of the towns and villages are connected by fully sealed roads, allowing for minimal driving on major roads. Contact the Groups Liaison Officer for customised itineraries and suggestions – 02 4823 4531.

Goulburn – Gunning – Crookwell – Taralga – Goulburn

Goulburn Visitor Information Centre – 02 4823 4492

Crookwell Visitor Information Centre – 02 4832 1988

Taralga Visitor Information centre – 02 4840 2558

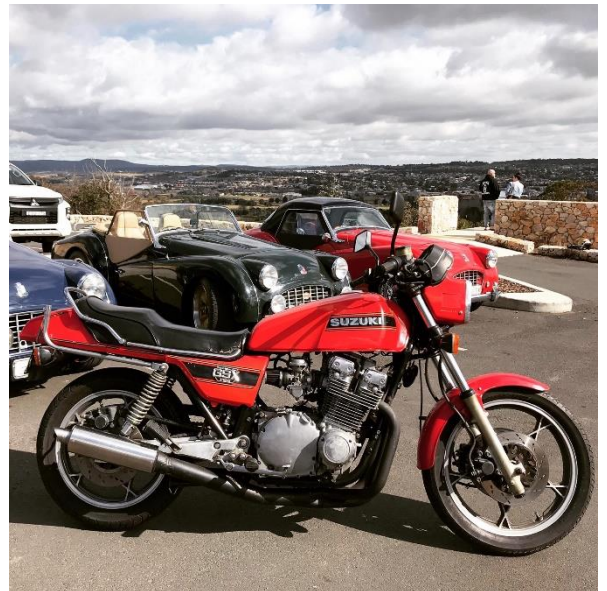
Laggan Community Hall Committee – 02 4837 3082

Goulburn – Bungonia – Windellama – Goulburn

CWA Bungonia/Windellama Branch - 48445545

Bungonia Progress Association - 4844 7273

Windellama Progress Association – 02 4844 7275



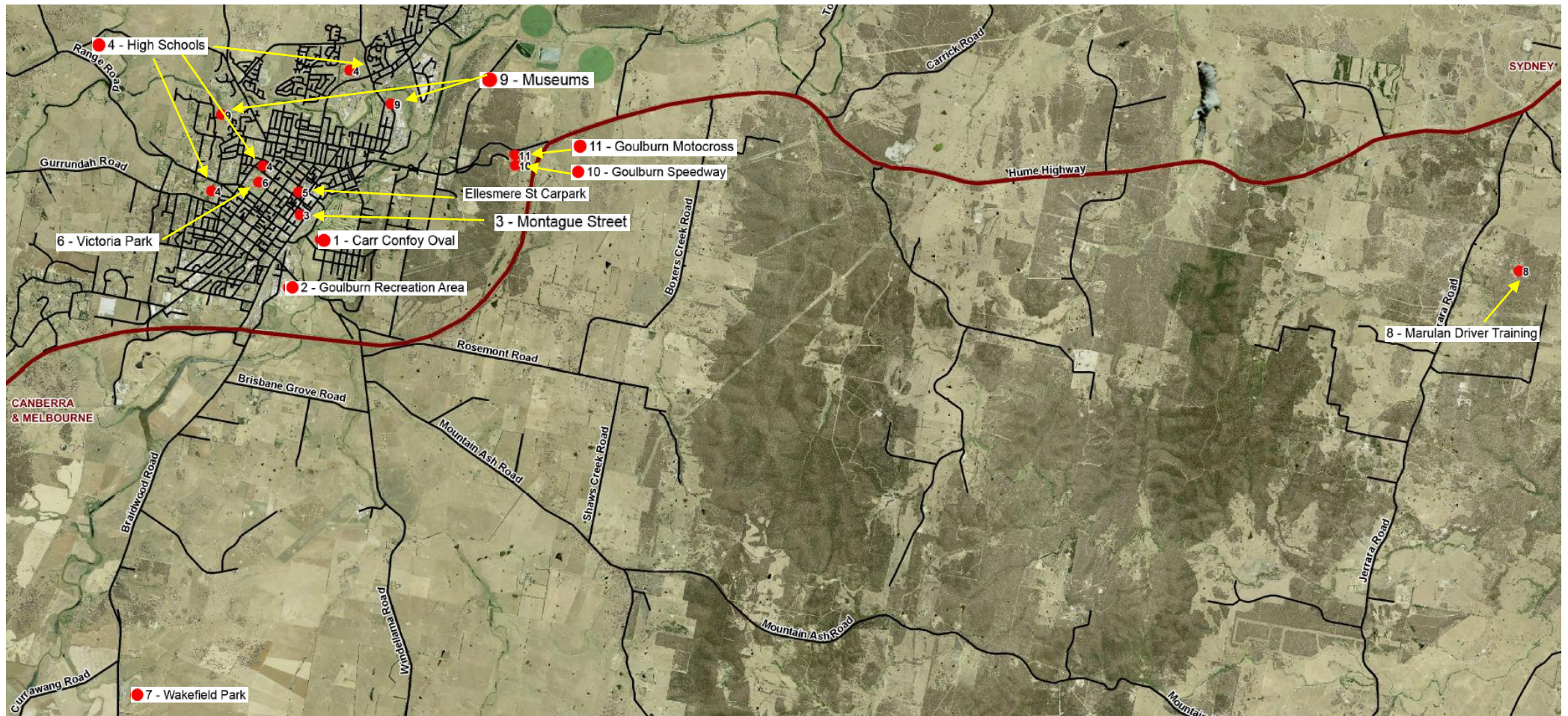
Facilities Available - Descriptive Table

Name	Description	Useable area		Basic facilities				Limitations	Contact
		hard stand/asphalt	grass area	catering facilities	toilets	undercover area	meeting facilities/office		
Car Confoy Oval (Park Road)	Land on the eastern side of Carr Confoy Sports Fields. Access off Emma St, adjacent to Goulburn Golf Club	Nil – Please note Netball area is not suitable for car access	Level area comprising of approximately 2 hectares. Not suitable for use in periods of high rain. For use of event cars only (no spectator parking available on grass area)	Basic canteen facilities available, no cooking	Yes	Small undercover seated area	Small rooms available for office/meeting space & registrations	Sports Clubs will be using some of the site most weekends throughout the year. This is managed by consulting with the relevant club and also may require approval from the Sports Council	Council (02) 4823 4538 or (02) 4823 4444
Goulburn Recreation Area (47 Braidwood Road)	This is a large multi use site comprising various open space and under cover areas	Yes, various areas	Yes, various areas	Yes	Yes, various toilet blocks	Yes, including Peden Pavilion/Skillion and stadium areas	Yes	Due to the various uses of the site there may be constraints on the areas and dates that are available. Approval may also be required from the Recreation Area Committee	Council (02) 4823 4538 or (02) 4823 4444

Name	Description	Usable Area		Basic Facilities				Limitations	Contact
		hard sand/ asphalt	grass area	catering facilities	toilets	undercover area	meeting facilities/office		
Montague St	Street within CBD that Council may close for approved events	Space for approximately 130 cars	Nil	Nil - central to numerous cafes and restaurants	Available in Belmore Park	Nil	Nil	Refer to Council policy "Support for Festivals, Events & Road closures"	Council (02) 4823 4538 or (02) 4823 4444
Local Schools	Schools ovals, halls	Site dependant	Site dependant	Site dependant	Site dependant	Site dependant	Site dependant	These are non Council sites, please contact schools directly for more information	Visitor Information Centre (02) 4823 4492
Ellesmere St Car park (adjoins Clifford Street)	Council car park	Car park only	Nil	Nil - central to numerous cafes and restaurants	Toilets available in local shops, Centro Shopping Centre and Belmore Park	Nil	Nil	Suitable only to Sunday closures due to high use on weekdays and Saturdays	Council (02) 4823 4538 or (02) 4823 4444
Victoria Park (Faithful Street)	Opposite Goulburn Base Hospital. Large park area, includes Seiffert and Prell Ovals and Goulburn Aquatic Centre	Nil, though internal asphalt path available	Various large open space areas available	Nil reasonably located to CBD	Several small toilet blocks available	Nil	Nil	The playing surface of Seiffert Oval not available for parking, may be other sports and events on	Council (02) 4823 4538 or (02) 4823 4444

Name	Description	Usable Area		Basic Facilities				Limitations	Contact
		hard sand/ asphalt	grass area	catering facilities	toilets	undercover area	meeting facilities/office		
Wakefield Park (4770 Braidwood Road)	Private Motor Racing Track	Asphalt race track	Yes	Discuss with site manager	Yes	Yes	Yes	Private business refer to site manager for more information	(02) 4822 2811
Pheasant Wood Circuit (8 Prairie Oak Road Marulan)	Private Driver Training Track	Asphalt track	Nil	Discuss with site manager	Yes	Yes	Yes	Private business refer to site manager for more information	(02) 4841 1422
Local Museums	Goulburn Historic Waterworks (Fitzroy Street) Riversdale (Twynam Drive) Contact Visitor Information Centre (VIC) for other potential sites	Discuss with site manager	Generally suited for smaller car club events	Discuss with site manager	Yes	Discuss with site manager	Discuss with site manager	Size restrictions may apply	Council (02) 4823 4538 or (02) 4823 4444 (02) 4821 4741 (02) 4823 4492
Goulburn Speedway	Club Speedway Racing Track	400m clay oval track	Pitt area	Canteen facilities	Yes	Nil	Nil	Refer to club for further information	0427 223 037 or 0428 213 622
Goulburn Motorcross Facility (119 Sydney Road). Under construction	Club Motocross track for recreational riding and racing	Clay surface	Yes	Yes	Yes	Clubhouse	Clubhouse	Refer to club for further information	www.goulburnmotorcycleclub.com.au

Facilities Available – Map



Fees, Charges and Waivers

All events that require use of a Council site or road closure will attract a fee. This fee may include:

- Ground hire fee
- Road closure fee
- Traffic Management services including plan preparation and installation
- Additional waste services
- Additional toilet cleaning services
- Other services that are required as part of your event

The fee for your event can be discussed with the relevant Council staff member.

At Councils discretion a waiver may be granted to relevant organisations as per council's fee waiver policy. A fee waiver usually requires a formal Council resolution. Any requests for a fee waiver should be made at least four months prior to your event to allow a report to be presented to Council.

Please refer to the fee waiver policy for more information – www.goulburn.nsw.gov.au

Competitive Events

Council does not permit competitive mobile type events on public roads.

Road Closures:

Montague Street

- A pre-existing closure arrangement is in place for Montague Street.
- Subject to availability and other bookings being held that particular month, your event may be able to use Montague Street without requiring any special approvals.
- The use of Montague Street is also governed by the *Support for Festivals, Events and Road Closures Policy*:
 - This policy includes the provision that apart from Montague Street being closed for the monthly Markets, only one other road closure per month is permitted
 - Formal council approval may be required if your event is outside the policy requirements
- For smaller events, the road may be blocked at the 'mid block crossing' (and not Post Office Lane) to enable regular car parking to continue on Montague Street (between Auburn Street and Post Office Lane).

Market Street

- Approvals are generally not available for the closure of Market Street.
- A formal request for the closure of Market Street must be made to Councils Traffic Committee.

Street Parades

On suitably approved occasions Council may allow a street parade to occur in Auburn St (the “Main Street”). The basic process to undertake a street parade is as follows:

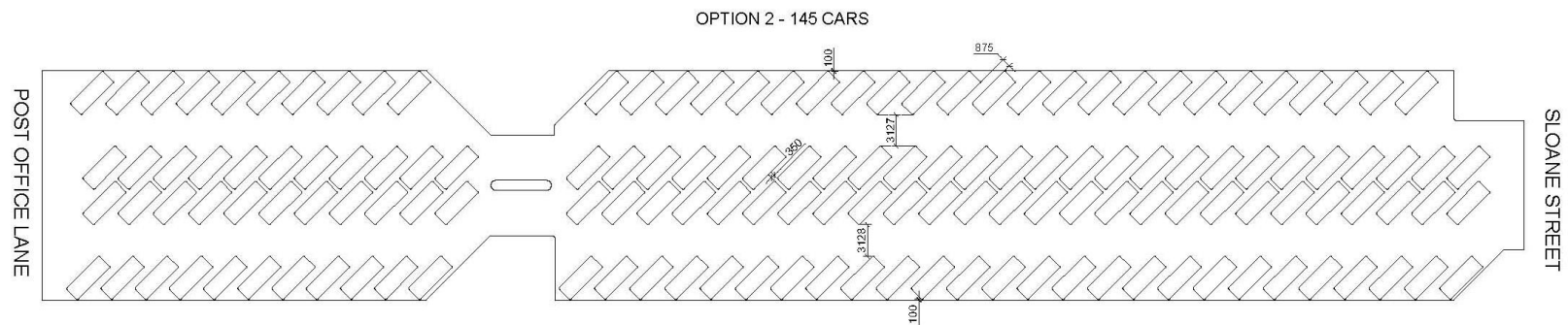
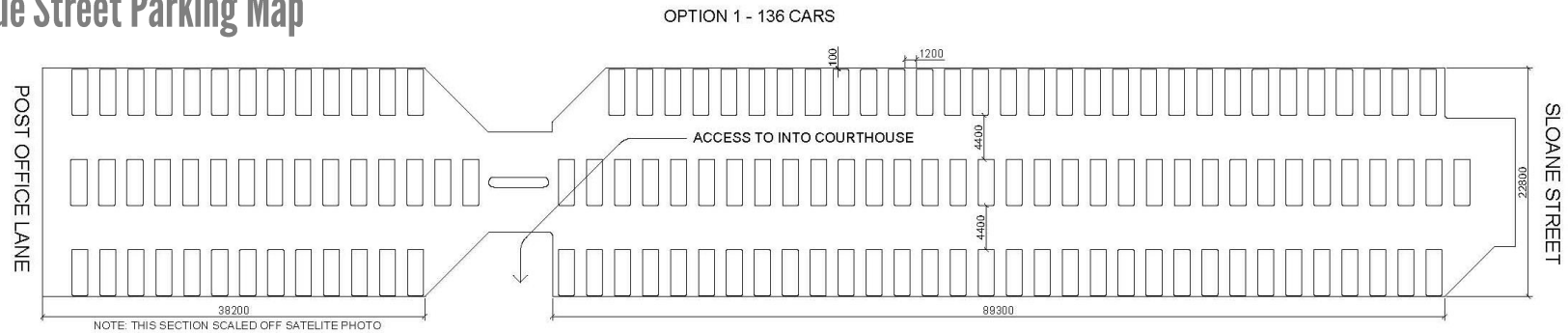
- At least 6 months prior to your event contact needs to be made with Councils Manager of Engineering Services to discuss your request.
- You may be required to prepare a detailed Traffic Management Plan (TMP) for your event, your request will be sent to Councils Traffic Committee for approval. The Traffic Committee comprises representatives from the Police, Roads Maritime Services (RMS) and Council.
- Your request may also require specific council approval. Council meets monthly with agendas closing two weeks prior to the meeting. Please allow time for this process.
- The preparation and implementation of the Traffic Management Plan will be at the organisers cost unless specifically resolved otherwise by Council.



Other relevant contacts

Organisation name	Phone	How they can help
Goulburn Chamber of Commerce	(02) 4822 2280 or 0418 483 482	To enable local businesses to prepare for the possible increase in visitors to the town
Other service clubs i.e. Rotary, Lions, Scouts, Rural Fire Brigades	Contact the Visitor Information Centre for contact details	To assist with catering and other site services, e.g. parking
Police	Goulburn Police Station (02) 4824 0799	Please contact the police to discuss traffic requirements
Local media contacts	Newspapers Goulburn Post – Mon, Tue, Fri (02) 4827 3500 Post Weekly—Thu Town & Country Magazine—Mon Radio 93.5 Eagle FM (02) 4821 7777 1368 2GN & Hot Country (02) 4821 3377 FM103.3 Goulburn Community Radio (02) 4822 1103	Assist with publicising your events

Montague Street Parking Map



Disclaimer: This service is provided by the Goulburn Marketing and Events Unit of Goulburn Mulwaree Council. Council provides this information with the understanding that it is not guaranteed to be accurate, correct or complete. Conclusions drawn from this information are the responsibility of the user. Every effort has been made to ensure accuracy however Council assumes no responsibility in the event that any information is incorrect. Council assumes no liability for damages incurred as a result of incomplete, incorrect or omitted information. Businesses included in this directory are not necessarily endorsed or approved by Council. The user of this information assumes all liability for their dependence on it. Please advise staff at the Goulburn Visitor Information Centre (ph 4823 4492) of any updates needed or requests for inclusion. *Published by the Goulburn Visitor Information Centre, last revised: (09/09/20JW).*