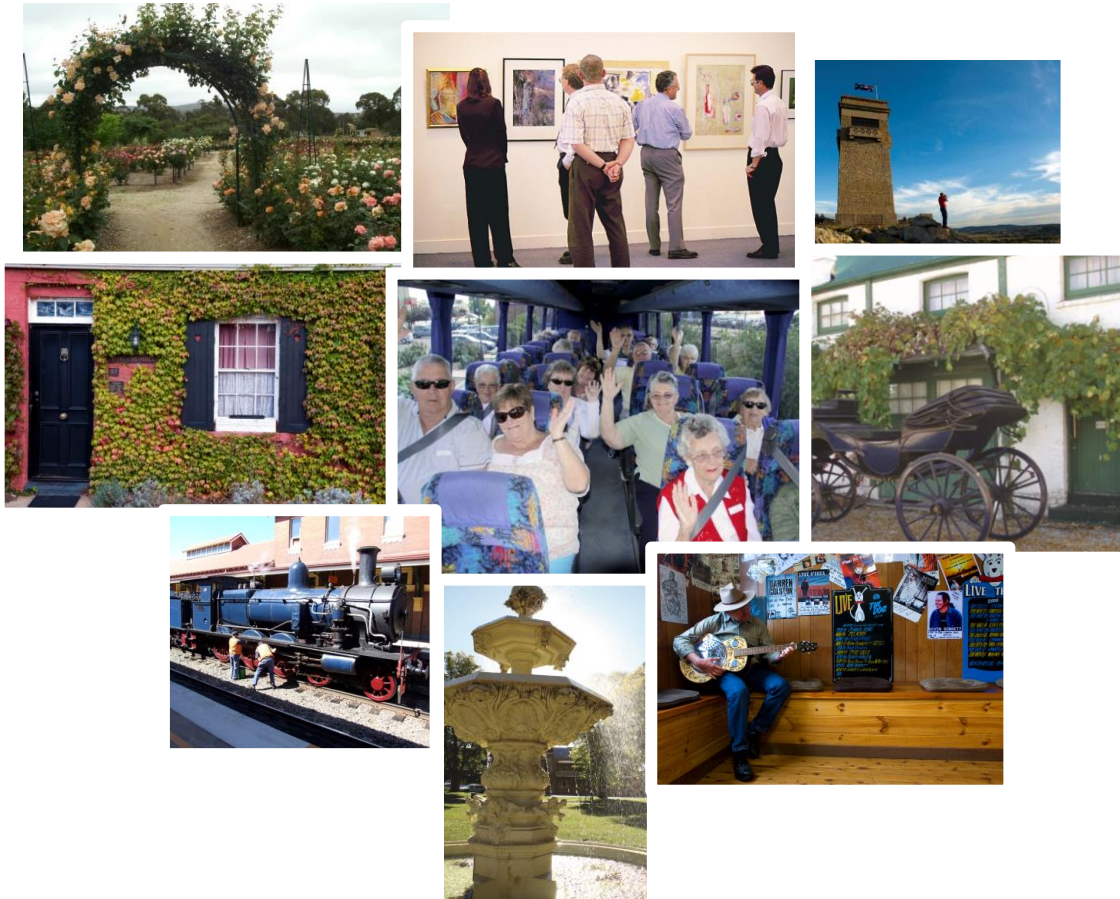


# Day Tours



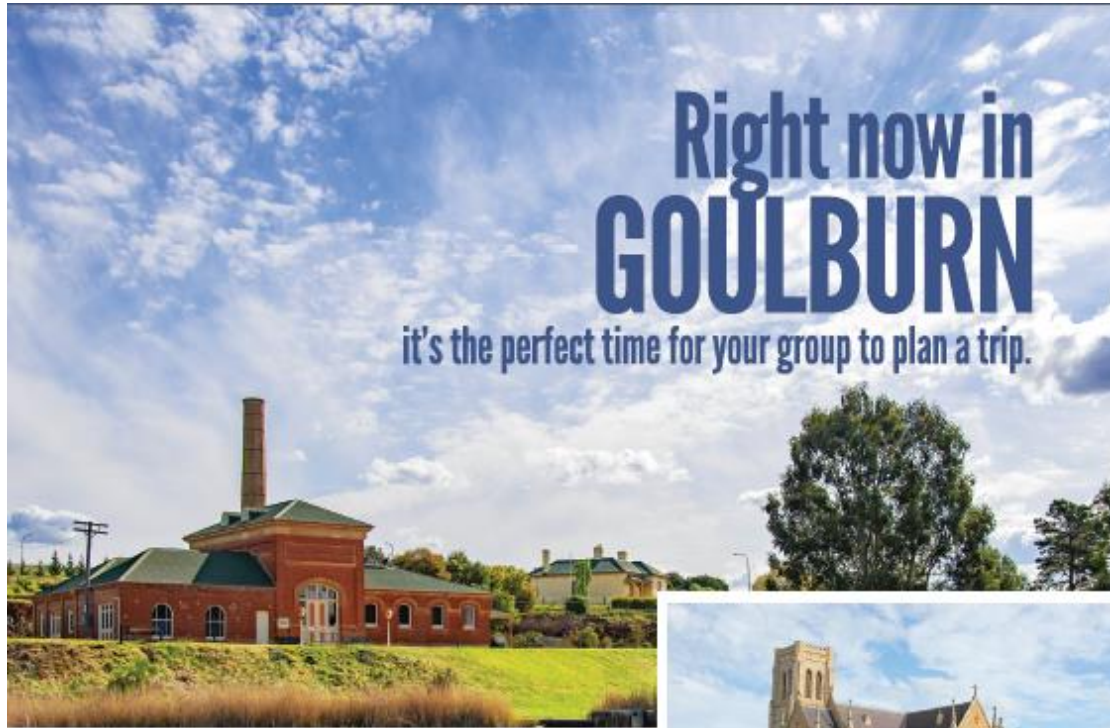
Make your next visit to Goulburn a memorable one by taking advantage of the abundance of wonderful sites our day tours offer.

The attached tours have been designed to cater for any area of interest, enabling you to select any itinerary to best suit the personality of your group and make your next visit to Goulburn a memorable one. You can even take the highlights of each day to create your own customised day tour in Goulburn.

For any kind of assistance, more information or to enquire about a hosted tour please contact the Goulburn Visitor Information Centre's Groups Liaison Officer on 02 4823 4531.

\* Suggested itineraries require coach transport to be pre-arranged.

GOULBURN  
*Australia*



Right now in  
**GOULBURN**  
it's the perfect time for your group to plan a trip.

*Enjoy a day out with your host,  
featuring:*

- A Guided City Tour, including a visit to the Historic Waterworks Museum
- A tour of St Saviour's Cathedral, including an organ recital
- Lunch and a sweet treat at the Visitor Information Centre
- Guided tour of Garroorigang Historic Home, including afternoon tea
- A surprise visit to one of our main attractions

**#rightnowingoulburn**



**From \$50 per person\***

Contact the Groups Liaison  
Officer, Jacki on (02) 4823 4531

\*Tours do not include coach hire.  
\*Price based on groups of 20 people.




[goulburnaustralia.com.au](http://goulburnaustralia.com.au)

(02) 4823 4492

 VisitGoulburn

GOULBURN  
*Australia*

  
**GOULBURN**  
*Australia*  
**Guided City Tour**



Available year round, our guided city tour allows visiting coach groups to enjoy a snapshot of our historic City of Goulburn without leaving the comfort of your coach!

An expert tour guide will board your coach and show you the sights of Goulburn. You get to see how history has unfolded and hear a local tale or two.

The tour is excellent value at just \$103.00 per coach weekdays, Saturday is \$128.75; Sunday and public holidays are \$154.50 (all incl. GST). Best of all, everyone who is on a guided city tour receives 10% off selected items at the Goulburn Visitor Information Centre!

### Places of interest include:

- ◆ NSW Police Academy
- ◆ Gallows Hill
- ◆ Victoria Park Rose Gardens (depending on season)
- ◆ St Saviour's and St Peter & Paul's Cathedrals
- ◆ Historic Hotels and significant buildings
- ◆ Goulburn Regional Art Gallery or the Historic Waterworks as a planned stop

The tour is 90 minutes in length and includes an opportunity to get off at either the Goulburn Regional Art Gallery or Historic Waterworks depending on the day and time your tour is booked.

Long vehicle parking and public toilets are available at the Goulburn Visitor Information Centre. We also offer 10% off a range of products in our shop front for groups.

Book your guided city tour of Goulburn today by contacting the Goulburn Visitor Information Centre.



  
**GOULBURN**  
*Australia*  
**Historic Day Tour 1**



**10.00**

**Goulburn City Guided Tour**

The Goulburn Visitor Information Centre will provide you with a guide who boards your coach and shows you the sights of Goulburn, revealing the history- or local tale behind many of the landmarks throughout the city. Places of interest include St Saviour's Cathedral, NSW Police Academy, Historic Hotels, Gallows Hill, and either the Goulburn Regional Art Gallery or Historic Waterworks.

**11.30**

**Riversdale Homestead - tour and lunch**

Built around 1840 as a coaching inn and residence, Riversdale is a fine example of a single story Georgian cottage set in beautiful gardens. The property is National Trust listed and has a collection of fine Australian furniture and art dating from the late nineteenth century. Light lunches can be arranged including soup, sandwiches, cakes, tea and coffee.

**13.10**

**St Saviour's Cathedral - tour**

Enjoy a guided tour of an Edmund Blacket design built in 1884 with the tower and bells added in 1988. Some of the outstanding features of the Cathedral include spectacular stained glass windows, beautiful chapels and a magnificent pipe organ. St Saviour's Cathedral expresses the grace, care and forethought of a great architect at the height of his powers. It gains the effect of spaciousness without being very big, and of splendour without being over-ornate.

**14.30**

**Garroorigang Homestead - tour**

Garroorigang Homestead dates back to 1867 and is the home of the Hume family, descendants of one of Australia's most famous explorers. Apart from small alterations, mainly to accommodate family needs, Garroorigang has remained largely unchanged for 150 years. In addition to the original furnishings, the home contains an unequalled collection of antiques from its time.

  
**GOULBURN**  
*Australia*  
**Historic Day Tour 2**



- 10.30**            **Goulburn Rail Signals Museum**  
Governor Lord Belmore opened the station buildings in 1869, to coincide with the completion of the railway, which made Goulburn a major railway centre. Enjoy a guided tour of this fascinating rail signals museum, and historic railway station.
- 11.15**            **St Peter & Paul's Cathedral - tour**  
The Old Cathedral is constructed from a diorite porphyrite and is the only church of this stone in Australia, and possibly the world. The old cathedral is a significant example of 19<sup>th</sup> century gothic ecclesiastical design and craftsmanship. The organ is the only unaltered William Hill organ in Australia.
- 12.15**            **lunch**  
Goulburn offers an array of eateries for your group. Choose from a range of restaurants and styles, from fine dining to alfresco.
- 13.15**            **Goulburn Rail Heritage Centre - tour**  
Goulburn Rail Heritage Centre operates a working Roundhouse housing heritage locomotives (steam and diesel), rolling stock and railway ephemera. The centre shows the transition of locomotive maintenance, steam to dieselisation. A large workshop building is on display with all tours being guided by Goulburn Roundhouse staff. Most guides are railway men who were based at the Goulburn Roundhouse.
- 14.30**            **Goulburn Historic Waterworks - tour**  
Come and see the fully operational steam engines - the 1883 Appleby Bros. beam engine and the 1860s Hick Hargreaves Corliss valve engine. The beam engine was installed at the waterworks in the 1880s to pump water for the City of Goulburn. Step back in time to the 1880s when Goulburn was one of the first regional centres to supply piped drinking water to –its residents. The Historic Waterworks is located in an idyllic setting on the banks of the Wollondilly River.

  
**GOULBURN**  
*Australia*  
**Arts Day Tour**



**10.00**      **Goulburn Regional Art Gallery (GRAG)**

The GRAG is the largest and only regional gallery within an eighty kilometre radius of Goulburn's bustling CBD. The gallery offers guided tours to each of the regularly changing exhibitions, and morning or afternoon tea if required. With the GRAG's permanent collection including more than 300 works, the gallery represents the diverse and rich range of artists from the surrounding region.

**11.00**      **Gallery on Track**

Gallery on Track is located in a beautifully restored historic 19<sup>th</sup> century railway barracks building, close to the heart of Goulburn. It features an ever-changing array of hand-made items by artists and craftspeople from the region. Find jewellery, textiles, painting, photography, woodwork, ceramics, clothing, scarves, glassworks, and so much more - everything from classic to quirky! The Gallery offers special talks and demonstrations by its members for groups on topics including felting, beadwork, textile arts, jewellery arts & painting.

**12.00**      **lunch and self- guided tour of "Art in Public Places"**

This guide to public art includes a map showing locations and details about each piece. Let it guide you through the Goulburn CBD where you can choose between a range of restaurants and styles, from fine dining to alfresco. Let your taste buds be the judge. <https://goulburnregionalartgallery.com.au/public-art>

**15.00**      **House of Alpaca**

House of Alpaca, was originally a textile buying, selling and manufacturing production. The House of Alpaca has now become a complete manufacturing and retail outlet of 100% Australian Alpaca products.

# GOULBURN *Australia* Accommodation

Don't have enough time in one day to see all that Goulburn has to offer? Why not stay a night or two in one of Goulburn's well appointed and affordable accommodation venues.

Goulburn has a large range of accommodation options available to suit a variety of needs and budgets.

A large selection of Goulburn's accommodation venues will put together packages for your group to include a two or three course dinner, accommodation and breakfast.



Affordable accommodation, fantastic eateries and an abundance of history, architecture and specialty shopping makes Goulburn a must do on your itinerary.



We look forward to welcoming you, come be a part of it!

